

RX



RX 300 | RX 450h | RX 450hL | SELECT YOUR LEXUS





In this brochure we invite you to prepare for the excitement of choosing your new Lexus RX. Showcasing the latest in Lexus design, the new RX luxury SUV features a bold 'spindle grille' and jewel-like LED headlights.

Equipped with a pioneering Self-Charging Hybrid, you will find the RX 450h a great pleasure to drive, wherever you venture.

Inside, the RX is more sophisticated than ever. The large 12.3-inch multi-media display is easy to read and intuitive to control via a central Remote Touch device. Ultra-precise leather stitching and 'Takumi'-crafted materials give the cabin an air of modern elegance and refinement.

All RX models is equipped with the breakthrough Lexus Safety System +. This includes a Pre-Collision System with pedestrian detection; Lane Keeping Assist with Sway Warning function to help you stay on course; Automatic High Beam for enhanced vision at night; Road Sign Assist that recognises traffic signs and Dynamic Radar Cruise Control.

For 7-seat luxury you can choose the new RX 450hL, while the dynamic RX 450h F SPORT model features an exclusive mesh grille, more responsive suspension, F SPORT interior and distinctive wheel designs.



RX 300 | RX 450h | RX 450hL



01. MODEL

Choose the pioneering RX 450h Self-Charging Hybrid or elegant 7-seat RX 450hL, dynamic RX 300 petrol turbo.

Pages 04-11



02. GRADES

What kind of RX best fits your lifestyle? Select from Comfort, Executive, F SPORT, F SPORT S and Luxury grades.

Pages 12



03. FEATURES

Discover the amazing level of standard and exciting optional features available for your new RX luxury SUV.

Pages 14-17



04. TECHNOLOGY

Learn more about RX technologies such as Lexus Safety System + and Lexus Premium Navigation.

Pages 18-21



05. ACCESSORIES

Explore the great range of accessories created by Lexus to enhance your enjoyment of the RX luxury SUV.

Pages 22-23



06. Sport

Sport grade equipment level is not available in the Baltic States.

Page 24



07. F SPORT

For a more dynamic driving experience, select the RX 300 F SPORT or RX 450h F SPORT.

Page 25



08. COLOURS

Choose your favourite exterior colour and specify a 'Takumi'-crafted interior that will make you feel at home every time you drive your new RX.

Pages 26-31



09. EQUIPMENT

The RX comes with a wide range of equipment as standard. Learn more about the extras you can add.

Pages 32-35



10. TECHNICAL DATA

Study all the key RX 300, RX 450h and RX 450hL technical data before ordering your new RX.

Pages 36-39



THE RX 300

Powered by a brand new 2.0-litre drivetrain, the RX 300 offers lively turbocharged performance, yet sips less fuel thanks to advanced D-4ST valve technology and 'Atkinson Cycle' capability. Drive Mode Select lets you tune the vehicle to suit your mood, while paddle shifts give smooth control of a 6-speed automatic transmission. The RX 300, which was tested in the harshest conditions and delivers 238 DIN hp and 350 Nm of torque, is available with All-Wheel Drive.



Stunning Deep Blue paintwork,
20" alloy wheels.

THE RX 450h

Powered by our latest Lexus Hybrid Drive, the pioneering RX 450h intelligently combines a 3.5-litre V6 petrol engine with two electric motors, delivering seamless power to all four wheels. Thanks to the instantaneous torque of the electric motors, you can accelerate to 100 km/h in 7.7 seconds, while emitting just 132 g/km* of CO₂. Alternatively, use Electric Vehicle mode to drive in near silence, using no petrol and producing zero CO₂ or NO_x. The RX 450h's hybrid battery never needs charging and occupies minimum room, resulting in generous luggage space.

* For the Comfort grade equipped with 18" alloy wheels.



Super sharp Mercury Grey paintwork,
20" alloy wheels.

01. 2.0-LITRE TURBO ENGINE

Featuring a breakthrough combination of water-cooled cylinder head, integrated exhaust manifold and twin scroll turbocharger, this Lexus 2.0-litre turbo engine delivers fast throttle response and exhilarating performance. For enhanced fuel economy, innovative valve timing allows the engine to switch between the Otto and Atkinson cycles. Tested in extremely harsh conditions, this engine delivers a maximum output of 238 DIN hp with a maximum torque of 350 Nm, with combined CO₂ emissions from 193 g/km* and fuel consumption from 8.5l/100 km*.

* For the Comfort grade equipped with 18" alloy wheels.



01



01. 3.5-LITRE PETROL ENGINE

Comprising a 3.5-litre V6 Atkinson Cycle petrol engine and two high output electric motors, Lexus Hybrid Drive offers great performance yet is kind to the environment, with combined CO₂ emissions from just 132 g/km* and fuel consumption from 5.8l/100 km*. When braking or decelerating, kinetic energy is captured by the two electric motors and converted into electric power. This is stored in the compact hybrid battery (located under the rear seat) for later use when driving in Electric Vehicle mode or accelerating swiftly. The battery never requires external charging and recharges during normal driving.

* For the Comfort grade equipped with 18" alloy wheels.



01



02

02. HYBRID BATTERY

Featuring an innovative split design, and located under the rear seat so as not to encroach on the RX 450h's large luggage space, the hybrid battery provides high power output in relation to its weight. The RX 450h recharges its hybrid battery as required – using electricity generated when driving and braking – thus avoiding the need for any external charging.

03. LEXUS HYBRID DRIVE

No larger than a conventional automatic transmission, Lexus Hybrid Drive's front 123 kW electric motor, generator and power split mechanism are all housed in one highly compact hybrid transmission. Energy flows are managed by an advanced Power Control Unit that constantly optimises the allocation of power – electric, petrol or a combination of both. On the RX 450h, the innovative E-FOUR drivetrain features an additional 50 kW electric motor mounted on the rear axle, which provides instant torque on demand.



03

EXPERIENCE LEXUS HYBRID DRIVE



START UP, DRIVING OFF

When starting off, the powerful front and rear electric motors can swiftly propel the RX 450h up to 65 km/h, with electric power supplied by the hybrid battery. At this point the vehicle is almost silent, uses no petrol and produces zero emissions.

NORMAL DRIVING CONDITIONS

At speeds above 65 km/h the ultra-smooth V6 Atkinson Cycle petrol engine cuts in quietly while still receiving assistance from the electric motors when required. Through the near perfect distribution of its petrol and electric power sources, the RX 450h provides extraordinary driving enjoyment – together with low emissions and modest fuel consumption.

FULL THROTTLE ACCELERATION

Accelerate powerfully and the combined power of the electric motors instantaneously supplements the 3.5-litre petrol engine. Together they deliver a potent surge of torque to give breathtakingly fast linear acceleration precisely when you need it.

DECELERATION, STOPPING, BRAKING

When decelerating or coming to a halt, the petrol engine turns off, cutting emissions to zero. Brake, or take your foot off the accelerator, and regenerative braking harnesses the kinetic energy lost in other cars. It converts this into electrical energy for storage in the hybrid battery, which is why a Lexus Self-Charging Hybrid is always ready to go.



18" alloy wheels, 7-spoke design
Headlights, triple L-shaped LED
Sequential LED indicators, front and rear

COMFORT*

The Comfort grade offers RX owners great looks and connectivity.

* Only available on RX 300 and RX 450h.

Natural leather upholstery with ventilated front seats
9-speaker Pioneer® audio system
8" Lexus Media Display, rotary dial operation



20" alloy wheels, 5-twin-spoke, machined finish
Smart power tailgate
Intelligent Parking Sensors, front and rear

EXECUTIVE

The RX Executive grade is distinguished by subtle exterior hallmarks while delivering a high level of comfort.

Natural leather upholstery with ventilated front seat
9-speaker Pioneer® audio system
8" Lexus Media Display, rotary dial operation



20" alloy wheels, F SPORT design
Front and rear bumper, F SPORT design
12.3" Lexus Media Display and Navigation

F SPORT & F SPORT S**

For those in search of dynamic SUV looks, the F SPORT grade offers features such as an exclusive 'spindle grille', F SPORT wheels and sporty interior details.

** Only available on RX 300 and RX 450h.

F SPORT Natural leather upholstery and steering wheel
Machined aluminium sports pedals
Adaptive Variable Suspension (AVS)



20" alloy wheels with Sonic Titanium inserts
10" colour Head Up Display (HUD)
Adaptive Variable Suspension (AVS)

LUXURY

The ultimate RX for looks, refinement and comfort.

Exclusive natural leather upholstery
15-speaker Mark Levinson® Premium Surround system
Panoramic View Monitor





01



02



03



04



05



06

01. 18" ALLOY WHEELS

Sophisticated 7-spoke alloy wheels come standard on the new RX.

02. 20" ALLOY WHEELS

Give your new RX a bold and dynamic look with these dark silver 5-twin-spoke machined alloy wheels.

03. 20" ALLOY WHEELS

Add a personal touch with these 5-spoke wheels that can be customised with different colour inserts.

04. SMART POWER TAILGATE

A remote controlled tailgate ensures convenience, especially when your arms are full of shopping. With the key in your pocket or bag, simply place your hand or arm close to the Lexus rear badge and the tailgate will open. It also remembers how far you usually open it and automatically stops at this point.

05. SUNROOF / ALUMINIUM ROOF RAILS

An electric, tilt and slide, glass sunroof can be specified on the new RX. Extruded aluminium roof rails are also available. Enhancing the crossover's overall look, they offer sports functionality for transporting skis, bikes or surfboards.

06. PANORAMIC ROOF

A panoramic roof adds a sense of open-air freedom and sunshine to the RX cabin. There is also an opening glass section at the front to let fresh air into the cabin.

07. TRIPLE LED HEADLIGHTS

Sophisticated triple 'L'-shaped headlights use the same LED light source for both high and low beam. For a unique aura, they are underscored by Lexus-signature LED Daytime Running Lights.

08. SEQUENTIAL LED INDICATORS

Enhancing its sophisticated looks, sequential front and rear LED indicators make the new RX stand out even more in traffic.

09. LED FOG LIGHTS / CORNERING LIGHTS

LED front fog lights juxtapose with the 'spindle grille' and LED daytime running lights and are fitted with high brightness LED cornering lights. Compared to conventional lights they also help reduce overall energy consumption.

10. LED REAR LIGHTS

Powerful 'L'-shaped LEDs create crystal-like linear illumination from the rear corners of the RX to the centre of the tailgate. These extra-wide rear lights offer sharp visibility and an eye-catching look.

11. WELCOME ILLUMINATION

As you approach the RX with the key in your pocket or bag, gentle lights on the door handles illuminate to welcome you.

12. ADVANCED DOOR MIRRORS

Designed to reduce wind noise, heated door mirrors incorporate an indicator, Blind Spot Monitor and Panoramic View Monitor. Electro chromatic technology reduces dazzle at night, and the mirrors fold electrically for negotiating narrow spaces. When reversing they also tilt downwards for enhanced vision.

13. FLOATING-ROOF DESIGN

To the rear of the RX you'll notice distinctive blacked-out and chrome framed C-pillars, which provide a floating-roof effect never before seen on a Lexus.



07



08



09



10



11



12



13



01

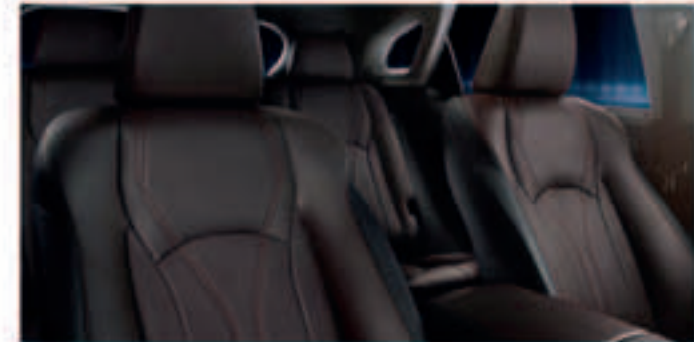
02



03



04



05



06

01. LEATHER STEERING WHEEL

This 3-spoke leather steering wheel features finger rests and a cross-section optimised to fit comfortably in your hands. Available with heating for colder mornings, integrated switches control – where specified – audio, telephone, multi-information display, Dynamic Radar Cruise Control and Lane Keeping Assist.

02. LEATHER / WOOD DESIGN

On the Luxury grade, this heated steering wheel can optionally be specified in a leather / wood design. There is a choice of wood colour and finish.

03. CLIMATE CONCIERGE / NANOE® TECHNOLOGY

Constantly monitoring temperatures inside and outside the RX, breakthrough 'Climate Concierge' automatically adjusts cabin, seat and steering wheel temperatures. Infrared sensors track the body temperature of your rear seat passengers, adjusting air conditioning and seat heating/cooling. Additionally, award-winning nanoe® technology releases microscopic, negatively charged particles into the cabin to purify the air and effectively deodorise seats. They also have a pleasant, moisturising effect on your skin and hair.

04. ADJUSTABLE CUP HOLDERS

Cleverly designed, the two cup holders on the centre console have a high-grip mat at the bottom of the cup holder, enabling plastic bottles to be easily opened with one hand. The front cup holders are adjustable and capable of holding tall plastic bottles, or short cups and cans.

05. FRONT SEATS

Sumptuous leather front seats make use of the 'integrated foaming' production process. This motorsport-inspired technology allows greater comfort and lateral support, while extra powerful suction type seat ventilation is available too.

06. FLEXIBLE SPACE

A practical 40:20:40 split folding rear seat comes standard on all RX models, which allows easy stowage of larger items like a bike or surfboard. The central hatch lets you carry long items such as skis. With all rear seats folded down there is also room to carry bulkier objects.

01. THIRD ROW SEATING

Offering the flexibility to carry two children – or two adults on shorter trips – the new 7-seat RX 450hL is fitted with electrically folding third row seats.

02. TONNEAU STORAGE

To improve seat and boot flexibility, when not in use, the tonneau cover can be stored under the luggage space floor.

03. THIRD ROW ACCESS

Second row seats slide and fold to offer easy access to the third row of the RX 450hL.

04. CUP HOLDERS

The RX 450hL features two large cup holders for the convenience of third row seat passengers.

05. CLIMATE CONTROL

For exactly the desired temperature, the third row seats on the RX 450hL feature an individual air conditioning zone, which can be controlled either from the seat or via the central multimedia screen.

06. POWER SEATING

The third row seats can be operated electrically from the second row or from the boot.



01



02



03



04



05



06



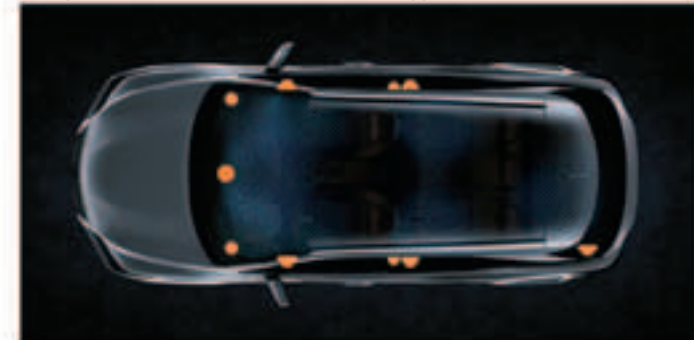
01



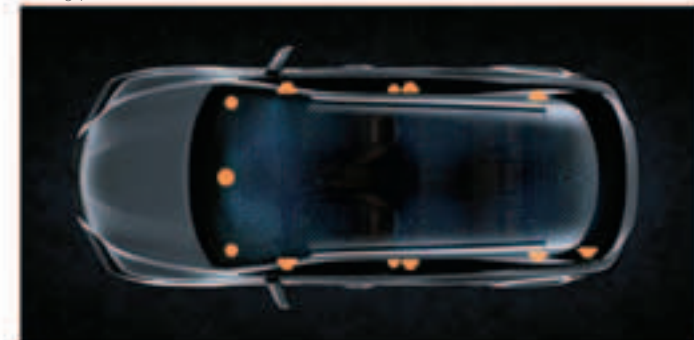
02



03



04



05



06



07

01. EXTRA LARGE DISPLAY / PANORAMIC VIEW MONITOR

Perfectly positioned for a relaxing drive, the extra large 12.3-inch central display can be operated by voice command or Remote Touch. Its split-screen capability allows you to simultaneously access information, such as Lexus Premium Navigation and climate information. For easier driving in confined spaces, four cameras provide a near-360° view around the entire vehicle. Panoramic View Monitor also creates a virtual 3D view of your RX, with on-screen guides to assist close-quarter manoeuvring in the city.

02. MULTI-INFORMATION DISPLAY

This 4.2-inch colour TFT (Thin Film Transistor) is fitted between the two main instruments and keeps you informed about all key data including safety warnings and navigation directions.

03. LEXUS PREMIUM NAVIGATION

With vivid 3D graphics and many mapping options, Lexus Premium Navigation is operated by the latest Remote Touch or voice commands. The system can even generate a QR code for your smartphone, to help you reach your final destination on foot.

04. 9 OR 12-SPEAKER PIONEER® AUDIO

A 9-speaker Pioneer® audio system is fitted as standard to Comfort and Executive grades. This features an AM/ FM RDS tuner, CD player and Bluetooth® connectivity. The 12-speaker Pioneer® audio system (with subwoofer) is standard on the F SPORT models and features a bespoke sub woofer position on the RX 450hL.

05. MARK LEVINSON®

The 15-speaker Mark Levinson® Premium Surround system with GreenEdge™ technology is tailored to the acoustic properties of the RX. It delivers a peerless 7.1-channel digital home-theatre experience enhanced by Clari-Fi™ that rebuilds sound lost in MP3 digital compression.

06. EXTRA-WIDE HEAD-UP DISPLAY

Vehicle data is projected in colour directly onto the windscreen. This large Head-Up Display (240 mm x 90 mm) lets you check data like navigation commands or audio settings without taking your eyes off the road ahead.

07. WIRELESS CHARGER

Charge compatible smartphones or other electronic devices using the inductive wireless battery charger, conveniently positioned in the RX's centre console box.

01. EURO NCAP 5-STAR RATING

The RX and new RX L were awarded the highest, 5-star rating in prestigious Euro NCAP tests. Scores for all areas were well above the minimum required to achieve five stars, with the best pedestrian protection score ever achieved by a large SUV. This makes the RX and new RX L amongst the very safest vehicles in their respective segments.

02. TEN AIRBAGS

All RX models are equipped with ten airbags and seatbelt pre-tensioners. In a collision, impact intensity sensors activate front dual-stage driver/passenger airbags and side airbags accordingly. Front seat passengers also benefit from cushion airbags for knee protection, while curtain shield airbags run the full length of the side windows.

03. RX 450hL AIRBAGS

For the 7-seat model our engineers redesigned the shape of the side curtain airbags to better protect 3rd row passengers.

04. INTELLIGENT PARKING SENSORS

In addition of alerting you when the front or rear parking assist sensors detect an object in your path at speeds below 15 km/h, Drive Force Limiting Control reduces acceleration and warns you to 'brake' via the multi-information display. Should a collision prove unavoidable, Brake Control would bring the RX to a halt.

05. BLIND SPOT MONITOR

Radar devices mounted in the rear bumper detect vehicles in adjacent lanes that are not visible in the door mirrors. If the driver is indicating to change lane and a vehicle enters the blind spot, a warning signal appears in the relevant door mirror(s).

06. REAR CROSS TRAFFIC ALERT AND BRAKING

Enhancing the security provided by Intelligent Parking Sensors, Rear Cross Traffic Alert and Braking uses the Blind Spot Monitor radar to detect vehicles approaching the area behind the RX when reversing in car parks. Should a collision prove likely, Drive Force Limiting Control and Brake Control would activate to avoid or mitigate collision damage.



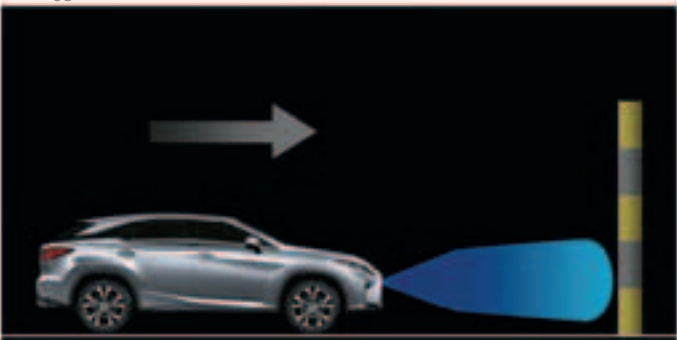
01



02



03



04



05



06

01. LEXUS SAFETY SYSTEM +

Breakthrough Lexus Safety System + is standard on the RX and includes a Pre-Collision System with pedestrian detection; Lane Keeping Assist to help you stay on course; Automatic High Beam for enhanced vision at night; Road Sign Assist that recognises traffic signs and Dynamic Radar Cruise Control, which regulates your speed to that of the vehicle in front.

02. PRE-COLLISION SYSTEM / PEDESTRIAN DETECTION

Millimetre-wave radar and an on-board computer calculate collision risk ahead. If the risk is high, Pre-Collision System alerts the driver and brake pressure is increased. When a collision is deemed unavoidable, the brakes will be applied automatically as necessary and the front seatbelts tightened. Furthermore, if an object (such as a pedestrian) is detected in front, automatic braking will activate at speeds between about 10 and 80 km/h to help avoid a collision.

03. DYNAMIC RADAR CRUISE CONTROL

For a more relaxing drive, Dynamic Radar Cruise Control maintains a set distance between the RX and the vehicle ahead, even if that vehicle varies its speed or stops.

04. LANE KEEPING ASSIST / AUTOMATIC HIGH BEAM

Lane Keeping Assist (LKA) uses a camera in the front windscreen to monitor your position in lane. If you start drifting out of lane, LKA will activate a warning buzzer and give corrective steering input. At night, Automatic High Beam uses the same camera as Lane Keeping Assist to detect oncoming vehicles and automatically dip the high beam headlights. This reduces the chance of accidentally dazzling other drivers and lets you concentrate on the road ahead.

05. ADAPTIVE HIGH-BEAM SYSTEM

An adjustable LED Adaptive High-beam System prevents the RX from dazzling other road users. A total of 11 independent LED chips in the headlight are enabled/disabled for precise control of the illuminated and non-illuminated areas.

06. ROAD SIGN ASSIST

The Road Sign Assist (RSA) system on the RX recognises traffic signs using the windscreen mounted camera, and provides information to the driver in the multi-information display. RSA can detect signs that are compliant with the Vienna Convention (including electroluminescent and flashing signs).

Under no circumstances should Lexus Safety System + be used to replace your driving skills at the wheel. Please read the instructions very carefully before operating the system and remember the driver is always responsible for safety. Details of specifications and equipment are subject to change to suit local conditions and requirements. Please enquire at your local Lexus Authorised Retailer.

01. STRONGER CHASSIS

The latest RX is incredibly precise and responsive to drive thanks to a stronger chassis, improved suspension and new steering technology. Advanced laser screw welding and adhesive bonding techniques combine to produce an SUV of great strength, which rewards drivers with refined high speed handling characteristics. Crumple zones front and rear absorb energy in an accident, while the steering column is also engineered to collapse in a severe frontal collision. Strengthened pillars, floor members and side impact beams dissipate energy even further.

02. ADVANCED AERODYNAMICS

The RX has excellent aerodynamics, thanks to a near-flat underbody and rear spoiler. To reduce the overall drag coefficient, Lexus engineers also redesigned the door mirrors and added winglets at strategic positions around the vehicle. These measures not only enhance stability and handling, they also improve fuel efficiency and reduce wind noise.

03. DRIVE MODE SELECT

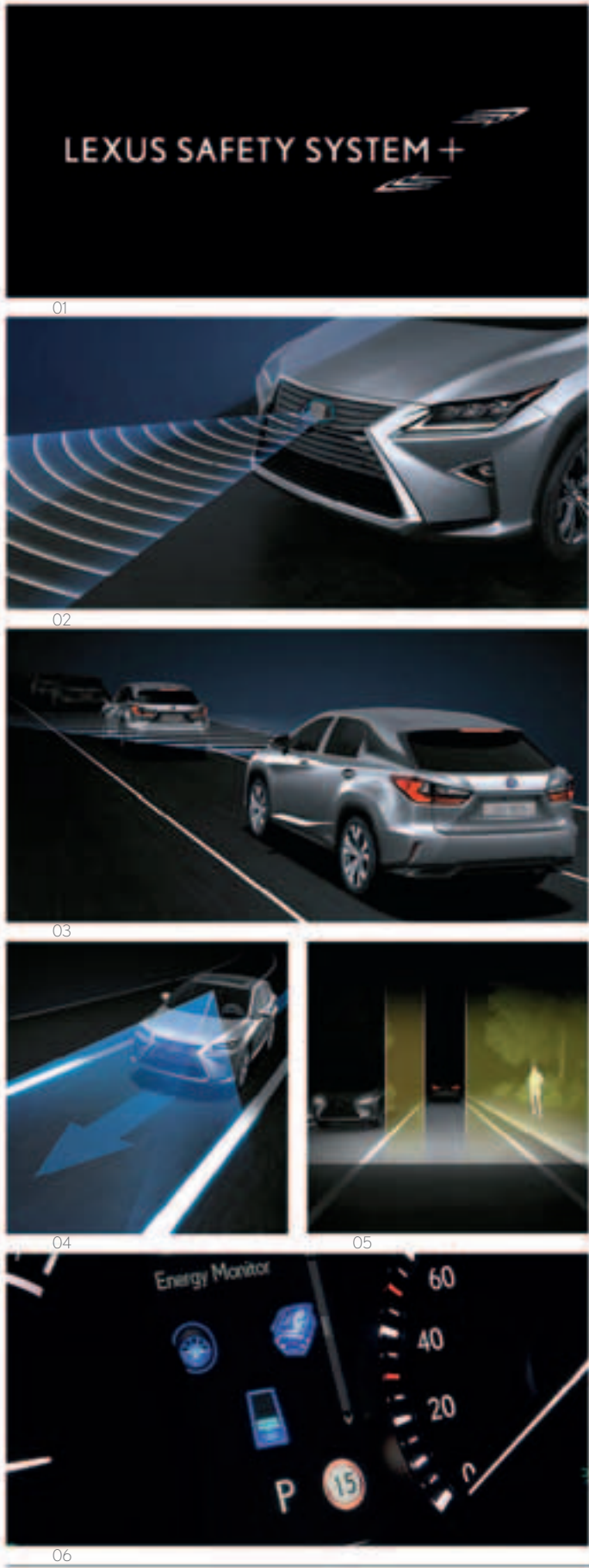
Located on the centre console, Drive Mode Select allows you to choose between ECO, NORMAL, SPORT S and SPORT S+ modes, for maximising the car's efficiency, dynamism or refinement. RX drivers can also use the CUSTOMIZE mode to tune the engine, hybrid system, chassis, and air conditioning functions.

04. ALL-WHEEL DRIVE / E-FOUR

While the RX 300's Active Torque Control AWD delivers optimised power, RX 450h features E-FOUR that gives seamless performance and confident traction over rougher terrain. The innovative E-FOUR drivetrain features the addition of a 50 kW electric motor mounted on the rear axle, which provides instant torque on demand.

05. ADAPTIVE VARIABLE SUSPENSION

For a more engaging drive, Adaptive Variable Suspension intelligently controls the damping force on all four wheels. This not only improves ride comfort, but also increases handling stability.





01



02



03



04



05



06



07



08



09



10

01. 18" SILVER ALLOY WHEELS

A bold 5-spoke design with a silver finish and big personality. Like all Lexus alloys, it is precision engineered for strength and optimum drive balance.

02. ALLOY WHEEL INSERTS

Cleverly designed to co-ordinate the colour of your car's body into the spokes of its 20" alloys. The inserts fix securely to the wheels and are available in sonic white, black and copper brown.

03. LEXUS NAVIGATION

Upgrades your car's media display to provide full map pan-European navigation including speed limit and camera notification*, RDS-TMC traffic information** and on-line search.

04. REAR LOWER TAILGATE GARNISH***

Subtle, yet very stylish. The chrome garnish fits along the bottom of the trunk door to add an extra design detail to the rear of your car.

05. SIDE DOOR CHROME GARNISH

A bold dash of chrome follows the lower side contours of your RX to emphasise its sculptured urban styling.

06. LUGGAGE BOOT LINER

Made of tough, flexible plastic with a non-slip surface pattern and a raised lip around the edges, the liner protects the luggage space carpet against mud, dirt, sand and liquids.

07. HORIZONTAL CARGO NET

Noise caused by a bag or case sliding in the luggage area can be a distraction to safe driving. This horizontal net solves the problem by holding everything firmly in place.

08. VERTICAL CARGO NET

So simple in concept and yet reassuringly practical. The net clips onto pre-fitted hooks in the luggage area and is ideal for keeping smaller items tidy yet accessible.

09. REAR BUMPER PROTECTION PLATE, BLACK***

Made of a rugged black composite material to provide durable protection for the rear bumper paintwork when loading and unloading the rear luggage space.

10. REAR BUMPER PROTECTION PLATE, STAINLESS STEEL

Combining style and strength – and made of polished stainless steel – the plate has a wrap-over edge to protect the rear bumper when loading and unloading the boot.

* Where it is legal to do so.
** Depending on local service availability.
*** Not available on the RX 450hL.

11. REAR FOLDABLE BICYCLE HOLDER*

A lightweight, high strength lockable design for carrying up to 2 bicycles. Includes an integral lights and licence plate holder with 13 pin socket.

12. ROOF-TOP BICYCLE HOLDER

This lockable, lightweight holder has special grips to secure both the bicycle wheels and the frame. Conveniently, the frame grip can be adjusted at roof height.

13. SKI AND SNOWBOARD HOLDER

Lockable holder with a soft inner grip to secure skis or snowboards without damaging them. Attaches to your car's cross bars and will hold 6 pairs of skis or 4 snowboards.

14. LUGGAGE BOX

A high capacity aerodynamic design that's ideal for holidays. It opens from both sides, has multi-point central locking and is finished in titan colour with an 'aeroskin' textured lid.

15. DETACHABLE TOWING HITCH*

Evenly distributes the pulling and braking forces of towing to minimise the risk of stress damage to your car. It has a vertically detachable hook and a bespoke wiring kit.

16. CROSS BARS**

For use with your car's pre-fitted roof rails. The cross bars lock onto the rails and form a secure base for a wide range of carrying attachments.

17. FLOOR MATS

Black or brown mats made of acuvellour to protect the cabin carpets and complement their sound absorbing qualities. Special safety fixings prevent the driver's mat slipping.

* Not available on the RX 450hL.
** Not compatible with the panoramic roof.



11



12



13



14



15



16



17



F SPORT

01. F SPORT DESIGN

A bolder 'spindle grille' featuring an exclusive mesh grille and a lower spoiler with satin-finish chrome protector combine to accentuate the RX F SPORT's dynamic looks. Details like an F SPORT badge (incorporating the curves of the Fuji Speedway), black door mirrors and distinctive 20" F SPORT alloy wheels underline the SUV's strong character.

02. F SPORT 20" ALLOYS

Designed exclusively for the F SPORT, these 20" alloys are finished in dark metallic paint to reflect the purposeful, sporting aspects of the car.

03. F SPORT INTERIOR

Vibrant 'Dark Rose' leather upholstery (with a black roof lining) is the signature interior colour on the RX F SPORT. Exclusive F SPORT seats feature 'integrated foaming' technology for added lateral support while cornering. Aluminium inlays perfectly complement the beautifully crafted F SPORT steering wheel, inspired by that of our iconic LFA supercar. Finished in perforated leather, the F SPORT gearshift design matches the steering wheel to create an exciting sports look.

04. F SPORT INSTRUMENTS

This F SPORT central meter features innovative Thin Film Transistor technology and a design inherited from the LFA supercar. The display features a tachometer needle and digital speed indicator, as seen on Lexus F marque cars.

05. G-SENSOR

For a more engaging drive, a G-Sensor displays the RX F SPORT's lateral and longitudinal G-forces in the multi-information display. The screen also presents the steering angle, throttle position, and hydraulic brake pressure.

06. BOOST METER

The RX 300 F SPORT features a boost meter that tracks the dynamic performance of the engine's turbo. The display also shows the temperature and oil pressure data.



01



02



03



04



05



06

DEVELOPING A NEW LEXUS PAINT COLOUR IS BOTH COMPLEX AND TIME CONSUMING



Lexus designers never use off-the-shelf colours, preferring instead to develop their own, from scratch, a process that can take up to two years. The Lexus paint palette totals some 30 different colours including metallic finishes like Satin Silver and Sonic Titanium.

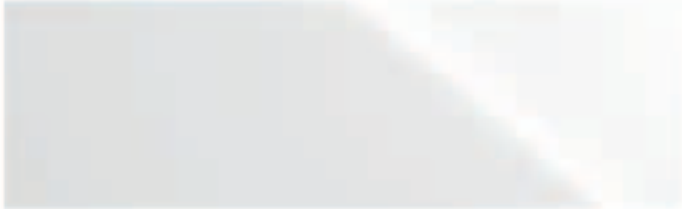
There are no shortcuts to creating a new Lexus colour: A designer's decision comes only after going through hundreds of samples. "When developing a new colour I see so many shades of paint that I sometimes can't see straight at the end of the day," says Megumi Suzuki, one of our most experienced colour designers. To do her job, it takes a grasp of chromogenics and a keen eye.

"Every time I meet someone or walk into a shop or go to someone's house, I check out colours and materials," she says. "There are a lot of people like me in our division."

Even after a colour has been decided upon, there's plenty to do. At various stages during development, Suzuki had to enlist a small army of experts: Lab technicians who mix the paint, clay sculptors, engineers and the assembly-line paint shop crew who would give each car a flawless, uniform coat. Every few weeks Kansai Paint (a Lexus paint supplier) produces a new batch, and Lexus designers give the samples a thorough look-over, bending the test panels to mimic the contours of a car. All are scrutinised indoors and outdoors, under floodlights, in sunlight, shade and overcast conditions, and at different times of the day and months of the year.

Selecting the final colour is not easy. A colour that is dazzling on a summer morning can appear sickly in the shade or under showroom lights. Designers also have to contend with the vagaries of their own preferences. "The odd thing about colour is that your perception of it can change depending on the season, how you feel that day and the trends you're seeing," says Suzuki.

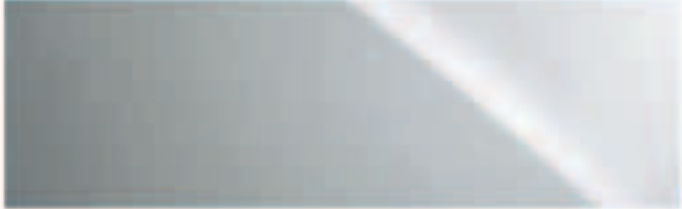
F WHITE | 083¹



SONIC WHITE | 085²



SATIN SILVER | 1J4



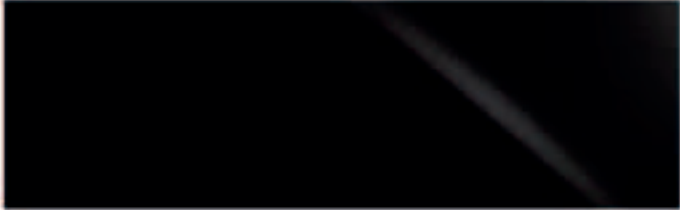
SONIC TITANIUM | 1J7



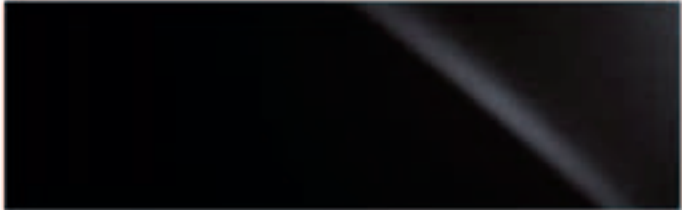
MERCURY GREY | 1H9



BLACK | 212³



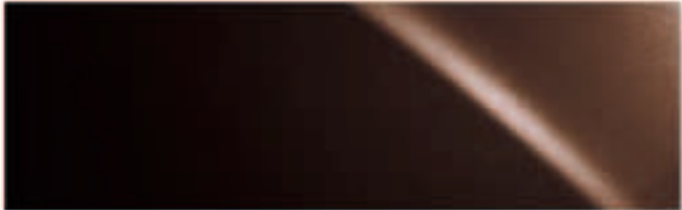
GRAPHITE BLACK | 223



MORELLO RED | 3R1



COPPER BROWN | 4X2²



SAND ECRU | 4U7²



DEEP BLUE | 8X5



SAPPHIRE BLUE | 8X1¹



¹ Exclusive on F SPORT models.

² Not available on F SPORT models.

³ Solid colour

Please note: due to printing variances, actual paintwork colours may vary slightly from those illustrated.

FABRIC / TAHARA TRIM¹

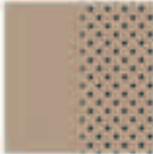


Black

NATURAL LEATHER²



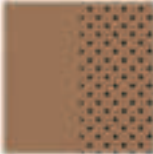
Black



Ivory



Noble Brown



Topaz Brown

EXCLUSIVE NATURAL LEATHER³



Black



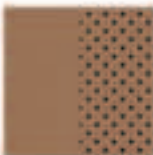
Ivory



Noble Brown



Rich Cream



Topaz Brown

F SPORT NATURAL LEATHER⁴



Black



Dark Rose



White

INLAYS⁵



Black Grain



Dark Brown,
Shimamoku



Laser Cut
Dark Wood



Dark Walnut



Bamboo

F SPORT INLAY⁶



Aluminium

¹ Not available in the Baltic States.

² Natural leather is standard on Comfort and Executive grades.

³ Exclusive natural leather is standard on Luxury grade.

⁴ F SPORT natural leather is standard on F SPORT.

⁵ Black Grain is standard on Comfort and Executive grades. A choice of four wood inlays, as illustrated, can be ordered on Luxury grade. Bamboo is only available in combination with Black, Ivory, or Topaz Brown leather.

⁶ Aluminium inlay is standard on F SPORT.

The images on the following 3 pages illustrate a selection of the interior combinations available. Your local Lexus Authorised Retailer will be pleased to provide you with any further help.



01



02



03

- 01 Noble Brown natural leather with Black Grain inlays (Executive and Comfort)
- 02 Black natural leather with Black Grain inlays (Executive and Comfort)
- 03 Ivory exclusive natural leather with Dark Walnut inlays (Luxury)



04



05



06

- 04 Rich Cream exclusive natural leather with Dark Brown Shimamoku inlays (Luxury)
- 05 Topaz Brown exclusive natural leather with Bamboo inlays (Luxury)
- 06 Noble Brown exclusive natural leather with Laser Cut Dark Wood inlays (Luxury)



07



08



09

- 07 White F SPORT natural leather with Aluminium inlays (F SPORT)
- 08 Dark Rose F SPORT natural leather with Aluminium inlays (F SPORT)
- 09 Black F SPORT natural leather with Aluminium inlays (F SPORT)

EQUIPMENT GRADES					
EXTERIOR	COMFORT*	EXECUTIVE	F SPORT*	FSPORTS*	LUXURY
Auto-levelling headlights	■	■	■	■	■
Cornering lights	—	—	■	■	■
Daytime running lights, LED	■	■	■	■	■
Door mirrors, auto-folding, heated	■	—	—	—	—
Door mirrors, electrically adjustable with memory, auto-folding, electro chromatic (auto-dimming), heated	—	■	■	■	■
F SPORT logos, front fenders	—	—	■	■	—
Front and rear bumper, F SPORT design	—	—	■	■	—
Front fog lights, LED	■	■	■	■	■
Headlight cleaners	■	■	■	■	■
Headlights, triple L-shaped LED	■	■	■	■	■
Privacy glass	■	■	■	■	■
Rain sensing windscreen wipers	■	■	■	■	■
Rear bumper with hidden single exhaust	■	■	■	■	■
Rear bumper with twin exhaust (RX 300)	■	■	■	■	■
Rear combination lights, LED	■	■	■	■	■
Rear fog lights	■	■	■	■	■
Roof rails	■	■	■	■	■
Sequential LED indicators, front and rear	■	■	■	■	■
Smart power tailgate	—	■	■	■	■
'Spindle grille'	■	■	—	—	■
'Spindle grille', F-mesh design	—	—	■	■	—
Towing capability (RX 450h, RX 300)	■	■	■	■	■
Ultra Violet (UV) and heat insulating tinted glass	■	■	■	■	■
WHEELS					
18" alloy wheels, 235/65 R18 tyres	■	—	—	—	—
20" alloy wheels, 235/55 R20 tyres	—	■	—	—	—
20" alloy wheels F SPORT design, 235/55 R20 tyres	—	—	■	■	—
20" alloy wheels with Sonic Titanium inserts, 235/55 R20 tyres	—	—	—	—	■
ACTIVE SAFETY AND DRIVING DYNAMICS					
Active brake lights	■	■	■	■	■
Active Sound Control (ASC) (RX 450h)	—	—	■	■	—
Active stabilisers (RX 450h)	—	—	—	■	—
Adaptive Variable Suspension (AVS)	—	—	■	■	■
Anti-lock Braking system (ABS)	■	■	■	■	■
Automatic High Beam (AHB)	■	■	■	■	—
Adaptive High-beam System (AHS)	—	—	—	—	■
Blind Spot Monitor (BSM)	—	□	—	■	■
Brake Assistant System (BAS)	■	■	■	■	■
Drive Mode Select, ECO / NORMAL / SPORT	■	■	—	—	—
Drive Mode Select, ECO / NORMAL / SPORT S / SPORT S+	—	—	■	■	■
Dynamic Radar Cruise Control (DRCC)	■	■	■	■	■
Electronic Brake-force Distribution (EBD)	■	■	■	■	■
Electronic Parking Brake (EPB)	■	■	■	■	■
Electronic Power Steering (EPS)	■	■	■	■	■
Electronically Controlled Braking (ECB)	■	■	■	■	■
EV (Electric Vehicle) mode (RX 450h, RX 450hL)	■	■	■	■	■
Hill-start Assist Control (HAC)	■	■	■	■	■
Intelligent Parking Sensors, front and rear	—	■	■	■	■

EQUIPMENT GRADES					
ACTIVE SAFETY AND DRIVING DYNAMICS	COMFORT*	EXECUTIVE	F SPORT*	FSPORTS*	LUXURY
Lane Keeping Assist (LKA)	■	■	■	■	■
Lexus Safety System + (LSS +)	■	■	■	■	■
Pre-Collision System (PCS)	■	■	■	■	■
Rear Cross Traffic Alert and Braking (RCTAB)	—	□	—	■	■
Road Sign Assist (RSA)	■	■	■	■	■
Traction Control (TRC)	■	■	■	■	■
Tyre Pressure Warning System (TPWS) with auto-location	■	■	■	■	■
Vehicle Dynamics Integrated Management (VDIM)	■ ¹	■ ¹	■	■	■
Vehicle Stability Control (VSC)	■	■	■	■	■
PASSIVE SAFETY					
Airbag cut-off switch, front passenger	■	■	■	■	■
Airbags, driver and front passenger; head, side and knee / rear side / full-length curtain shield	■	■	■	■	■
Audible and visual seatbelts reminder	■	■	■	■	■
ISOFIX attachment, outer rear seats	■	■	■	■	■
Seatbelt pre-tensioners, front and rear seats	■	■	■	■	■
SECURITY					
Anti-theft system – intrusion sensor / inclination sensor / siren / immobiliser	■	■	■	■	■
Auto door locking	■	■	■	■	■
Double door lock	■	■	■	■	■
AUDIO, COMMUNICATION AND INFORMATION					
8" Lexus Media Display	■	■	□	□	—
12.3" multimedia display	—	□	■	■	■
9-speaker Pioneer® audio system	■	■	—	—	—
12-speaker Pioneer® audio system	—	□	■	—	—
15-speaker Mark Levinson® Premium Surround system	—	—	—	■	■
Analogue clock	■	■	—	—	—
Analogue clock with GPS function	—	□	■	■	■
Antenna, incorporated within rear window	■	■	■	■	■
Digital Audio Broadcasting (DAB) radio	■	■	■	■	■
Head-Up Display (HUD)	—	□	—	■	■
Lexus parking assist monitor	■	■	■	■	■
Lexus Premium Navigation	—	□	■	■	■
Panoramic View Monitor (PVM)	—	—	—	■	■
Remote Touch operation for multimedia display	—	□	■	■	■
Rotary dial operation for Lexus Media Display	■	■	—	—	—
Steering wheel mounted controls – audio / display / phone / voice / DRCC / LKA	■	■	■	■	■
Wireless charger	—	□	■	■	■

* RX 300 and RX 450h only.

- Available as standard.
○ Available as an option.
□ Available as (part of) a pack.
— Not available.

¹ Not available on RX 300.

EQUIPMENT GRADES					
INTERIOR COMFORT AND CONVENIENCE	COMFORT*	EXECUTIVE	F SPORT*	FSPORTS*	LUXURY
3-spoke, leather trimmed steering wheel	■	■	—	—	■
3-spoke, perforated leather trimmed steering wheel with paddle shift controls	—	—	■	■	—
3-spoke, leather and wood trimmed steering wheel	—	—	—	—	□
Card key	—	—	—	—	■
Drilled aluminium pedals	—	—	■	■	—
Easy entry and exit facility, driver's seat / steering wheel with retract / return function	■	■	■	■	■
Electronic climate control, 2-zone (RX 450h)	■	■	■	■	■
Electronic climate control, 3-zone (RX 450hL)	—	■	—	—	■
Electronic climate control with auto recirculation	■	■	■	■	■
Electronic climate control with nanoe® technology	■	■	■	■	■
Front seat lumbar support, 2-way electrically adjustable	■	■	■	■	—
Front seat lumbar support, 4-way electrically adjustable	—	—	—	—	■
Front seats, 8-way electrically adjustable (with memory driver)	■	■	■	■	—
Front seats, 10-way electrically adjustable (with memory driver and passenger)	—	—	—	—	■
Front seats, F SPORT design	—	—	■	■	—
Gearshift knob, leather trimmed	■	■	—	—	■
Gearshift knob, perforated leather trimmed	—	—	■	■	—
Heated and ventilated front seats	■	■	■	■	■
Heated rear seats	—	■	■	■	■
Heated steering wheel	■	■	■	■	■
Inlays, Black Grain	■	■	—	—	—
Inlays, Aluminium	—	—	■	■	—
Inlays, wood	—	—	—	—	■
LED ambient illumination	—	—	■	■	■
Rear centre armrest with storage box	■	■	■	■	■
Rear seat bench, 40:20:40 split-folding, manual operation	■	■	■	—	■**
Rear seat bench, 40:20:40 split-folding, electrically folding (RX 450h)	—	—	—	■	■
Rear seat bench (3rd row) , 50:50 split-folding, electrically folding (RX 450hL)	—	■	—	—	■
Rear-view mirror, electro chromatic (auto-dimming)	■	■	■	■	■
Scuff plates, resin	■	■	—	—	—
Scuff plates, F SPORT design	—	—	■	■	—
Scuff plates, aluminium with LEXUS inscription	—	—	—	—	■
Smart entry system	■	■	■	■	■
Smart key	■	■	■	■	■
Sunroof, glass electric tilt / slide (RX 450hL)	—	□	—	—	○/□
Sunroof, panoramic electric tilt / slide (RX 450h)	—	□	○	○	○/□
Sunshades, rear doors manual	—	—	■	■	■
Tyre repair kit	■	■	■	■	■
Upholstery, natural leather	■	■	■	■	—
Upholstery, exclusive natural leather	—	—	—	—	■

■ Available as standard.
○ Available as an option.
□ Available as (part of) a pack.
— Not available.

EQUIPMENT PACKS					
PACKS	COMFORT*	EXECUTIVE	F SPORT*	FSPORTS*	LUXURY
Multimedia & Navigation package					
12.3" multimedia display	—	□	■	■	■
12-speaker Pioneer® audio system	—	□	■	■	—
Analogue clock with GPS	—	□	■	■	■
Lexus Premium Navigation	—	□	■	■	■
Remote Touch operation for multimedia display	—	□	■	■	■
Wireless charger	—	□	■	■	■
Multimedia & Navigation package with head-Up Display, Blind Spot Monitor, Rear Cross Traffic Alert and braking					
12.3" multimedia display	—	□	■	■	■
12-speaker Pioneer® audio system	—	□	■	■	—
Analogue clock with GPS	—	□	■	■	■
Lexus Premium Navigation	—	□	■	■	■
Remote Touch operation for multimedia display	—	□	■	■	■
Wireless charger	—	□	■	■	■
Blind Spot Monitor (BSM)	—	□	—	■	■
Rear Cross Traffic Alert and Braking (RCTAB)	—	□	—	■	■
Head-Up Display (HUD)	—	□	—	■	■
Multimedia & Navigation package with head-Up Display, Blind Spot Monitor, Rear Cross Traffic Alert and braking + Sunroof					
12.3" multimedia display	—	□	■	■	■
12-speaker Pioneer® audio system	—	□	■	■	—
Analogue clock with GPS	—	□	■	■	■
Lexus Premium Navigation	—	□	■	■	■
Remote Touch operation for multimedia display	—	□	■	■	■
Wireless charger	—	□	■	■	■
Blind Spot Monitor (BSM)	—	□	—	■	■
Rear Cross Traffic Alert and Braking (RCTAB)	—	□	—	■	■
Head-Up Display (HUD)	—	□	—	■	■
Sunroof, glass electric tilt / slide (RX 450hL)	—	□	—	—	○/□
Sunroof, panoramic electric tilt / slide (RX 450h)	—	□	○	○	○/□
Sunroof with Leather and Wood trimmed steering wheel					
Sunroof, glass electric tilt / slide (RX 450hL)	—	□	—	—	○/□
Sunroof, panoramic electric tilt / slide (RX 450h)	—	□	○	○	○/□
3-spoke, leather and wood trimmed steering wheel	—	—	—	—	□

* RX 300 and RX 450h only.

■ Available as standard.
○ Available as an option.
□ Available as (part of) a pack.
— Not available.

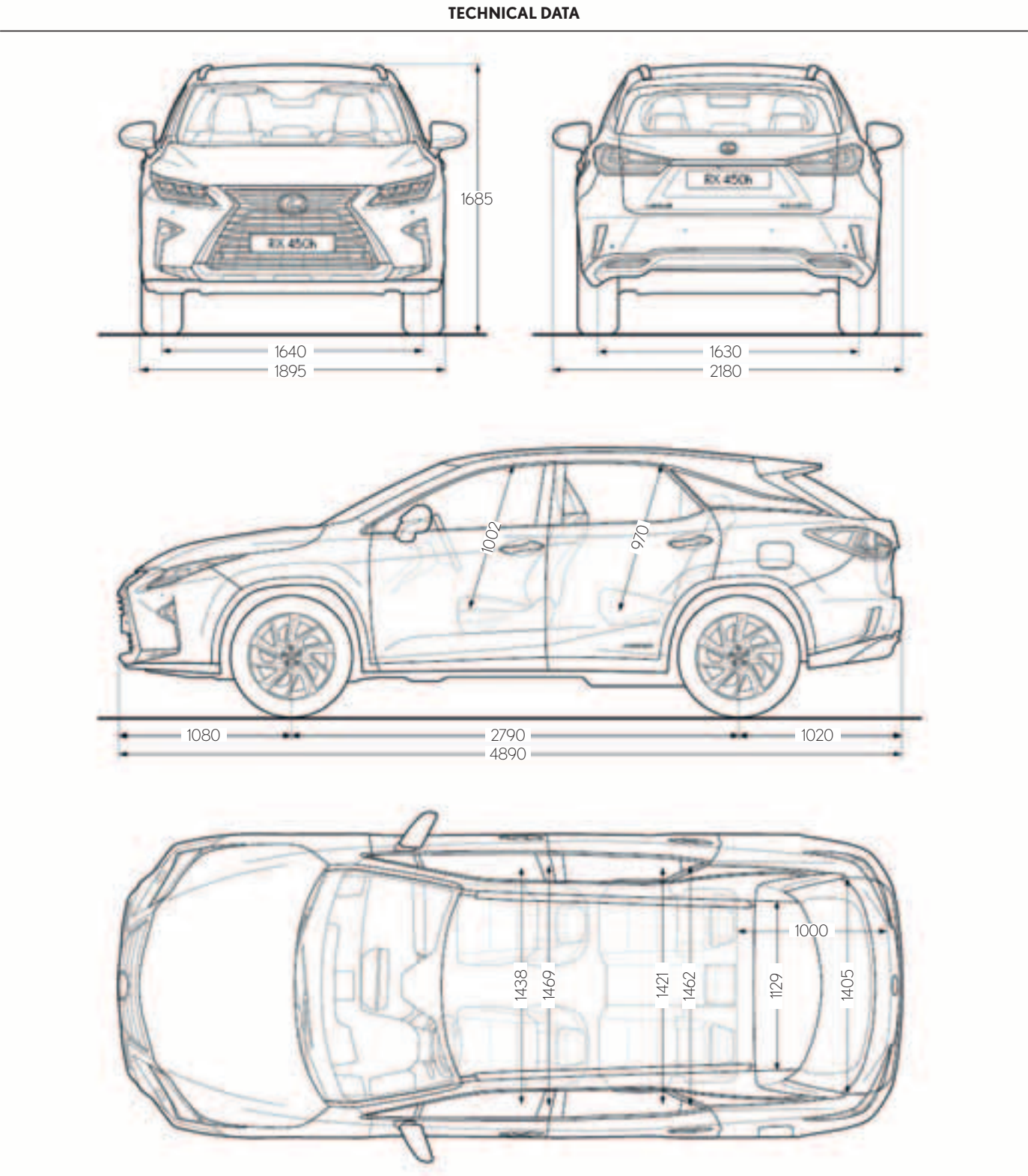
TECHNICAL DATA		
ENGINE	RX 300 AWD	RX 450h AWD
Capacity (cm ³)	1998	3456
Cylinders / Valves	L4 / 16	V6 / 24
Maximum power (DIN hp @ rpm)	238 @ 5200 - 5600	262 @ 6000
Maximum power (kW @ rpm)	175 @ 5200 - 5600	193 @ 6000
Maximum torque (Nm @ rpm)	350 @ 1650 - 4000	335 @ 4600
ELECTRIC MOTORS		
Type	–	AC synchronous, permanent magnet
Maximum power (DIN hp)	front/rear –	167 / 68
Maximum power (kW)	front/rear –	123 / 50
Maximum torque (Nm)	front/rear –	335 / 139
TRANSMISSION		
Type	6-speed automatic transmission	Electronic-Continuously Variable Transmission
Drive	All-Wheel Drive	All-Wheel Drive
TOTAL SYSTEM OUTPUT		
Total power (DIN hp)	238	313
Total power (kW)	175	230
PERFORMANCE		
Maximum speed (km/h)	200	200
Acceleration 0-100 km/h	9.5	7.7
FUEL CONSUMPTION* (l/100km)		
Urban	10.7 / 10.8	5.7 / 6.0
Extra urban	7.1 / 7.3	5.9 / 5.8
Combined	8.5 / 8.6	5.8 / 5.9
CO ₂ EMISSIONS* (g/km)		
Urban	245 / 248	130 / 137
Extra urban	163 / 166	134 / 133
Combined	193 / 196	132 / 134
EMISSION STANDARD		
Euro Class	EURO 6d-TEMP	EURO 6d-TEMP
WEIGHTS (kg)		
Gross vehicle	2575	2715
Kerb weight (min. - max.)	1960 - 2080	2100 - 2215
CAPACITIES**		
Luggage volume – rear seats upright, loaded to 2nd seat row top (l)	553	539
Luggage volume – rear seats folded down, loaded to the roof (l)	1626	1612
Fuel tank capacity (l)	72	65
Towing capacity max. unbraked (kg)	750	0 / 750
Towing capacity max. braked (kg)	1500	0 / 2000

* Figures differ by grade and alloy wheel size. 1st figure is for the Comfort grades specified as standard with 18" alloy wheels. 2nd figure is for all other grades with standard specification 20" alloy wheels.

The fuel consumption and CO₂ values are measured in a controlled environment on a representative production model, in accordance with the requirements of European Regulation EC 2017/1153 (as amended by Regulation EC 2017/1231). The fuel consumption and CO₂ values of your vehicle may vary from those measured. Driving behaviour as well as other factors (such as road conditions, traffic, vehicle condition, tyre pressure, installed equipment, load, number of passengers, etc) play a role in determining a car's fuel consumption and CO₂ emissions.

** Luggage volume is calculated as per the VDA method. All figures quoted include the under floor storage area in the luggage compartment.

Please note: further Technical Data, including any updates, can be found at www.lexus.lv / www.lexus.it / www.lexus.ee



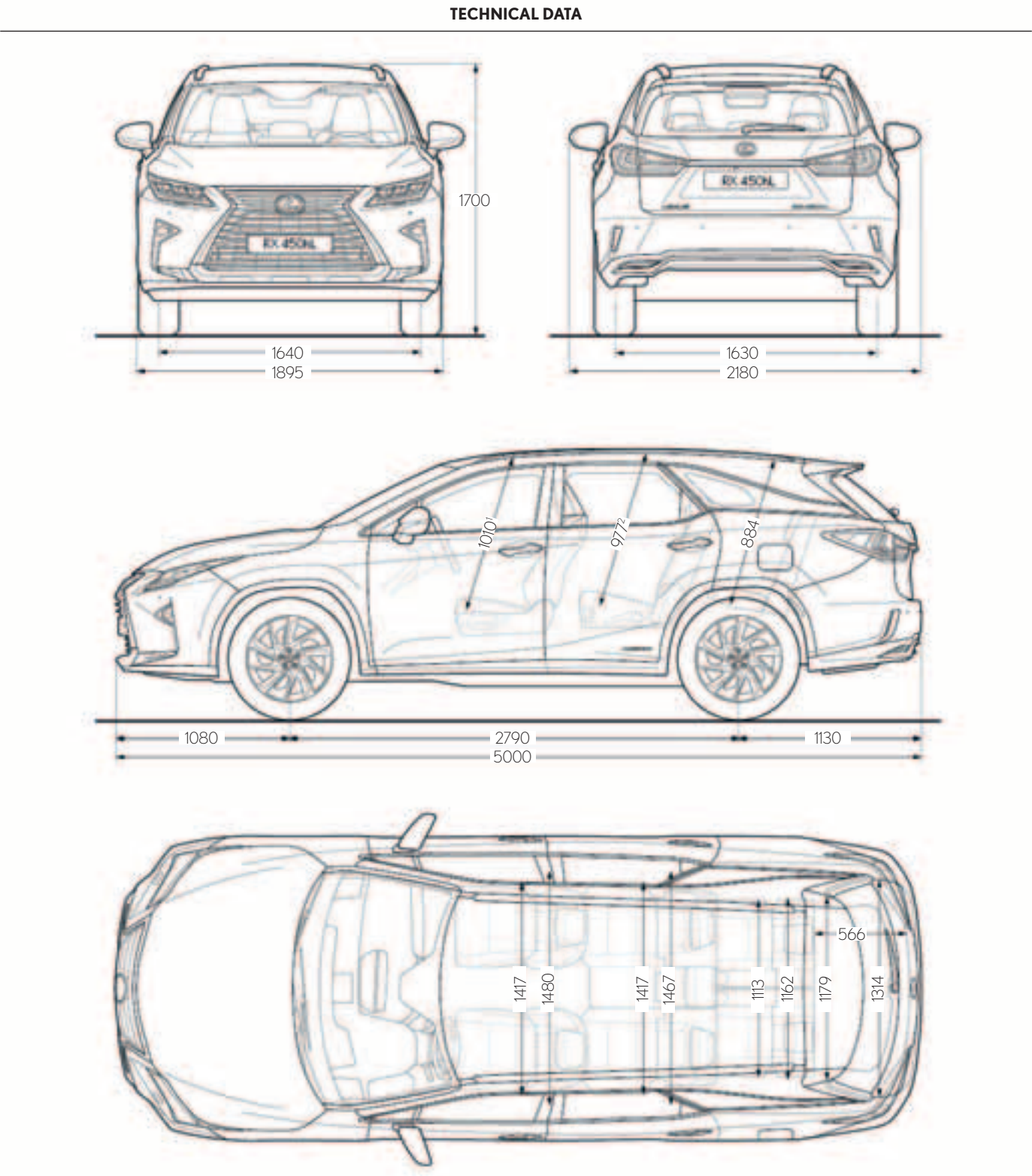
Please note: the dimensions illustrated / noted are measured in millimetres.

TECHNICAL DATA		
ENGINE		RX 450hL AWD
Capacity (cm ³)		3456
Cylinders / Valves		V6 /24
Maximum power (DIN hp @ rpm)		262 @ 6000
Maximum power (kW @ rpm)		193 @ 6000
Maximum torque (Nm @ rpm)		335 @ 4600
ELECTRIC MOTORS		
Type		AC synchronous, permanent magnet
Maximum power (DIN hp)	front/rear	167 / 68
Maximum power (kW)	front/rear	123 / 50
Maximum torque (Nm)	front/rear	335 / 139
TRANSMISSION		
Type		Electronic-Continuously Variable Transmission
Drive		All-Wheel Drive
TOTAL SYSTEM OUTPUT		
Total power (DIN hp)		313
Total power (kW)		230
PERFORMANCE		
Maximum speed (km/h)		180
Acceleration 0-100 km/h		8.0
FUEL CONSUMPTION (l/100km)		
Urban		6.2
Extra urban		6.0
Combined		6.0
CO ₂ EMISSIONS (g/km)		
Urban		142
Extra urban		137
Combined		138
EMISSION STANDARD		
Euro Class		Euro 6d-TEMP
WEIGHTS (kg)		
Gross vehicle		2840
Kerb weight (min. - max.)		2205 - 2275
CAPACITIES*		
Luggage volume – rear seats upright, loaded to 3rd row seat top (l)		176
Luggage volume – 3rd seat row folded down, loaded to 2nd seat row top (l)		474
Luggage volume – 3rd seat row folded down, loaded to 2nd seat row top, front most (l)		591
Luggage volume – 2nd and 3rd seat row folded down, loaded to the roof (l)		1656
Fuel tank capacity (l)		65
Towing capacity max. unbraked (kg)		0
Towing capacity max. braked (kg)		0

The fuel consumption and CO₂ values are measured in a controlled environment on a representative production model, in accordance with the requirements of European Regulation EC 2017/1153 (as amended by Regulation EC 2017/1231). The fuel consumption and CO₂ values of your vehicle may vary from those measured. Driving behaviour as well as other factors (such as road conditions, traffic, vehicle condition, tyre pressure, installed equipment, load, number of passengers, etc) play a role in determining a car's fuel consumption and CO₂ emissions.

* Luggage volume is calculated as per the VDA method.

Please note: further Technical Data, including any updates, can be found at www.lexus.lv / www.lexus.lt / www.lexus.ee



¹ Figure quoted is for RX 450hL models specified with the standard roof. Equivalent figure with the optional glass sunroof is 983.

² Figure quoted is for RX 450hL models specified with the standard roof. Equivalent figure with the optional glass sunroof is 963.

Please note: the dimensions illustrated / noted are measured in millimetres.

More about the new RX:

lexus.lv/RX

lexus.lt/RX

lexus.ee/RX

youtube.com/LexusEurope

twitter.com/Lexus_EU

© 2019 Lexus Europe* reserves the right to alter any details of specifications and equipment without notice. Details of specifications and equipment are also subject to change to suit local conditions and requirements. Please enquire at your local Lexus Authorised Retailer of any such changes that might be required for your area.

Note: Vehicles pictured and specifications detailed in this brochure may vary from models and equipment available in your area. Vehicle body colour might differ slightly from the printed photos in this brochure.

For further information please visit our website: www.lexus.eu

Taking care of the environment is a priority for Lexus. We take many measures to ensure that during the lifecycles of our vehicles – from design, production, distribution, sales and service to end-of-life – their environmental impact is minimised. Your retailer will be happy to provide more information on end-of-life vehicle requirements.

* Lexus Europe is a division of Toyota Motor Europe NV/SA.

Printed in Europe, March 2019

