

ES



ES 300h Self-Charging Hybrid





In this brochure we invite you to prepare for the excitement of choosing your new ES 300h executive sedan. Showcasing a bold Lexus 'signature grille' and coupé-like roofline, you'll find the ES 300h Self-Charging Hybrid a pleasure to drive and own.

Inside, the ES is more sophisticated than ever. The large 12.3-inch multi-information display is easy to read and intuitive to control via touch pad device or voice commands. Exquisite leather stitching and 'Takumi'-crafted materials give the cabin an air of modern elegance and refinement.

Now available with the optional Digital Side-View Monitor, all ES models are equipped with our latest Lexus Safety System +. This includes a Pre-Collision System, now with pedestrian detection at night and bicycle detection during daytime; Lane Tracing Assist to help you stay on course; two-stage Adaptive High Beam for enhanced vision at night; Dynamic Radar Cruise Control with integrated Road Sign Assist that recognises traffic signs.



01. MODEL

Pages 04-05



02. GRADES

Pages 06-07



03. FEATURES

Pages 08-10



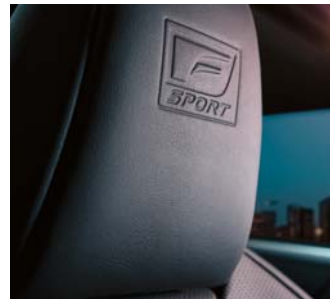
04. TECHNOLOGY

Pages 11-15



05. LIMITED EDITION

Page 16



06. F SPORT

Page 17



07. ACCESSORIES

Pages 18-19



08. COLOURS

Pages 20-25



09. EQUIPMENT

Pages 26-29



10. TECHNICAL DATA

Pages 30-31

THE ES 300h

The new ES 300h executive sedan features an all-new chassis that allows for a more dynamic exterior design and even more refined drive. Inside, the ES is more spacious and quieter than ever before, with sharpened performance, class-leading safety technology and a level of craftsmanship rarely found in this kind of car.



Stunning Graphite Black paintwork,
18" alloy wheels.

01. 4TH GENERATION LEXUS HYBRID DRIVE

The ES 300h is equipped with the very latest Lexus Self-Charging Hybrid that can deliver exceptional fuel efficiency, responsive performance and best-in-class CO₂ emissions from 119 g/km. It couples an ultra-efficient 2.5-litre Atkinson cycle four-cylinder petrol engine with a lighter, more compact electric motor. Total system power is 218 PS/160 kW and combined cycle fuel economy is from 5,2 l/100km.

02. HIGHLY EFFICIENT PETROL ENGINE

The 2.5-litre petrol engine is all-new and incorporates fast-burn combustion technology that makes it one of the most thermally efficient engines ever built. The result is more power without increasing emissions or fuel consumption. Features that help achieve such impressive results include straight intake ports, increased valve angles and laser-finished valve seats. A variable-capacity oil pump, multi-hole injectors, VVT-iE on the intake valves and a variable cooling system also contribute to the engine's impressive heat and combustion management.

03. NEW HYBRID TRANSMISSION

Engineered to work perfectly with the 2.5-litre engine, this new transmission utilises a multi-axle arrangement of the electric motors in place of the previous coaxial layout to reduce the overall length of the transaxle by nearly 30mm. The traditional planetary gear set has been replaced by a parallel shaft gear and a multi-function gear that incorporates a power split planetary ring gear, parking gear and counter drive gear into one compact unit.

04. COMPACT HYBRID BATTERY

The nickel metal hydride battery that powers the electric motor and stores power has been relocated from the boot to underneath the back seat. This was made possible by a 120mm reduction in the height of the battery and the adoption of a more compact cooling system. Moving the battery under the seat not only frees up luggage space, it also improves weight distribution for better handling.





17" alloy wheels, machined finish, 215/55 R17 tyres
L-mesh signature grille
Headlights, Bi-LED with Automatic High Beam (AHB)
Blind Spot Monitor, Rear Cross Traffic Alert and Braking

COMFORT

The Comfort grade offers ES owners great looks and standard equipment.

Tahara upholstery
8" multimedia display
10-speaker Pioneer® audio system



18" alloy wheels, machined finish, 235/45 R18 tyres
Headlights, bi-LED with Automatic High Beam (AHB)
Tahara upholstery, heated steering wheel, metal scuff plates
12.3" multimedia display with Lexus Premium Navigation, wireless charger

LIMITED EDITION

The new ES 300h Special Edition offers a comprehensive range of features at a highly competitive price.

Blind Spot Monitor, Rear Cross Traffic Alert and Braking
10-speaker Pioneer® audio system



18" alloy wheels, machined finish, 235/45 R18 tyres
L-mesh signature grille
Headlights, Bi-LED with Automatic High Beam (AHB)
Leather upholstery

EXECUTIVE

The Executive grade is distinguished by subtle exterior hallmarks while delivering a high level of comfort.

8" multimedia display
10-speaker Pioneer® audio system
Lexus Navigation
Blind Spot Monitor, Rear Cross Traffic Alert and Braking



19" alloy wheels, F SPORT design, 235/40 R19 tyres
F-mesh signature grille
Headlights, Triple-LED with two-stage Adaptive High Beam System
F SPORT Tahara upholstery

F SPORT

For those in search of a more dynamic drive, the ES F SPORT grade offers features such as an exclusive 'signature grille', F SPORT wheels and sporty interior details.

12.3" multimedia display with Lexus Premium Navigation
10-speaker Pioneer® audio system
Blind Spot Monitor, Rear Cross Traffic Alert and Braking



19" alloy wheels, F SPORT design, 235/40 R19 tyres
F-mesh signature grille
Headlights, Triple-LED with two-stage Adaptive High Beam System
F SPORT Tahara upholstery

F SPORT S

For those in search of a more dynamic drive and top equipment, the ES F SPORT S grade offers high spec features such as an Mark Levinson audio system, Head-up Display .

12.3" multimedia display
17-speaker Mark Levinson® PurePlay
Lexus Premium Navigation
Head-up Display



18" alloy wheels, hyper-chrome coating, 235/45 R18 tyres
Headlights, Triple-LED with two-stage Adaptive High Beam System
Semi-aniline leather upholstery

LUXURY

The ultimate ES for looks, refinement and comfort.

12.3" multimedia display with Lexus Premium Navigation, Wireless charger
17-speaker Mark Levinson® PurePlay
Head-up Display
Panoramic View Monitor



01



02



03



04



05



06

01. 17" ALLOY WHEELS

The two-tone design combines a machined finish with a medium-grey metallic coating. Spoke surfaces merge at the rim to enhance aerodynamic performance.

02. 18" ALLOY WHEELS

The two-tone colour scheme combines a machined finish with a medium-grey metallic coating to create a sporty and luxurious look.

03. 18" ALLOY WHEELS

Noise-reducing wheels with a hyper-chrome metallic coating. Wheel size is emphasized by five dynamic multi-spindle spokes.

04. REAR BUMPER

The ES 300h rear bumper moulding creates a strong and powerful stance.

05. SUNROOF

An electric, tilt and slide, glass sunroof adds a feeling of freedom, spaciousness and light to the ES cabin.

06. REAR SPOILER

A bespoke rear spoiler enhances the aerodynamic performance of the new ES 300h.

07. BI-LED HEADLIGHTS

These headlights use the same light source for both high and low beam. They come with distinctive Lexus-signature L-shaped Daytime Running Lights.



07



08

08. TRIPLE LED HEADLIGHTS

These headlights consist of three ultra-small LED units that deliver exceptional light distribution. Equipped with sequential turn signal indicators, they come with multi-weather lights to help maintain a good field of view in foggy driving conditions. Another new safety advancement offered in the ES is a two-stage Adaptive High Beam System (AHS). This system not only turns the high beams on and off automatically for the driver, its 24 individual LED light array is capable of adapting the light pattern to provide enhanced illumination while reducing glare for oncoming drivers.



09



10

09. CORNERING LIGHTS

LED cornering lights provide extra illumination to the area close to the car when turning left or right or cornering.

10. REAR LED LIGHTS

Using the latest LED technology, the ES rear lights give the car an instantly recognisable visual signature with crystal-like linear illumination.

11. COUPÉ-LIKE SILHOUETTE

In a break with past generations, the design features a sleek roofline that emphasises the vehicle's lower stance and smooth aerodynamics.



11

12. HANDS-FREE POWER BOOT LID

For convenient loading and unloading the ES is available with a hands-free power boot lid. This can be opened and closed by moving your foot in front of a sensor located underneath the rear bumper while you are carrying the smart key.



12

13. STREAMLINED DIGITAL CAMERAS

Designed to improve your rear side view, cameras for the optional Digital Side-View Monitor are housed in slim, aerodynamic casings that complement your car's elegant lines. Smaller than conventional door mirrors, they reduce wind noise and intrude less into your forward-to-side view. The units also have built-in heaters to avoid freezing or misting and are designed to operate in heavy rain or snow.



13



01



02



03



04/05



06



07



08

01. DRIVER-FOCUSED COCKPIT

To reduce eye movement and potential distraction, all important instruments and displays are positioned close to your view of the road ahead. For seamless interaction, controls you use frequently such as Drive Mode Select and Remote Touch are concentrated around the steering wheel.

02. S-FLOW CLIMATE CONTROL / CLIMATE CONCIERGE

S-Flow Climate Control intelligently manages the interior climate in your ES according to ambient conditions, ensuring excellent comfort and fuel economy. It can, for example, detect if seats are occupied, and regulate the climate accordingly. The system also discharges mildly acidic nanoe[®] ions from the central air conditioner register on the driver's side of the cabin, helping to fill the cabin with fresh air. This mildly acidic atmosphere gently moisturises your skin and hair.

03. STEERING WHEEL

This three-spoke steering wheel combines real leather with finely grained wood and fits snugly and comfortably in your hands. Available with heating for colder mornings, integrated switches control audio, telephone, voice recognition, multi-information display, Dynamic Radar Cruise Control, Lane Keeping Assist and Lane Tracing Assist.

04. LEATHER SEATS

The natural leather or exclusive natural leather seats on the new ES are an outstanding example of the highest levels of Japanese 'Takumi' craftsmanship. The leather is of impeccable quality and the stitching is executed with immense precision. The result is seats of exceptional beauty and comfort.

05. FRONT SEAT ADJUSTMENT

New ES provides an ergonomic driving position that reduces fatigue and provides an excellent feeling of envelopment. Up to 16-way seat adjustment mechanisms allow various driving positions that are suitable for a wide range of drivers (up to 14-way for front seat passengers). For superb comfort on long journeys, up to 4-way lumbar support adjustment is available on the Executive and Luxury grades (2-way on the other grades).

06. HEATED AND VENTILATED SEATS

Seat heaters are available for the driver and front passenger on the new ES. On hot days, taking cold air directly from the air conditioner, the unit helps cool the occupants quickly. On Luxury grade, heated rear seats are available too.

07. REAR SEAT CONTROL PANEL

A control panel is provided on the rear centre armrest. Using the panel, the air conditioner, audio, rear seat heater, rear seat reclining, and sunshade functions can all be operated.

08. REAR SUNSHADE

To enhance comfort in hot weather a powered rear sunshade is available. Rear seat passengers can alter the shade for the rear, door and rear quarter windows.

01. HIGH RIGIDITY / LIGHTWEIGHT BODY

The ES has an extremely rigid body in order to deliver a ride that is particularly refined and stable. The chassis is constructed using Laser Screw Welding which is a Lexus first in this segment, and the use of adhesive bonding has been increased. This, along with the extensive use of lightweight materials such as aluminium, has helped minimise weight in order to improve fuel economy. In addition, the suspension tower brace in the engine bay and the V-shaped brace mounted at the front of the rear suspension link the chassis and the suspension, realising a high level of both ride comfort and handling performance.

02. AERODYNAMICS / HYBRID ACOUSTICS™

Every ES has excellent aerodynamics, including a near flush under body, which not only contributes to good fuel economy but also reduces wind noise and turbulence. In order to prevent noise from entering the ES cabin, many steps were taken such as improving door seals, minimising holes in the chassis and upper back of the car, and optimising the body sealant and panel alignment. Already an exceedingly quiet car, Hybrid Acoustics™ on the ES 300h Self-Charging Hybrid uses a 3-layer dash inner silencer in which a noise insulation sheet is sandwiched between two felt layers. This means travelling in the ES is always a highly rewarding experience, even at higher speeds.

03. ACTIVE NOISE CONTROL

Active Noise Control suppresses any booming noise in the cabin that is generated by the engine. Noise cancelling waves are output through the speakers which reduce the booming effect throughout the car.

04. DRIVE MODE SELECT

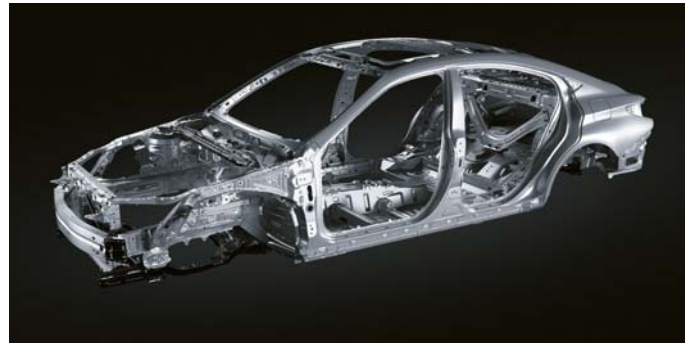
The Drive Mode Select switch has been placed beside the meter hood bezel so that it can be operated without making a big deviation from your line of sight or changing your driving position. Eco, Normal and Sport modes are standard, except for the ES 300h F SPORT and F SPORT S, which come with five choices: Eco, Normal, Custom, Sport S and Sport S+.

05. SWING VALVE SHOCK ABSORBER*

In search of world-class refinement, an ultra low velocity valve shock absorber has been engineered for the new ES 300h. Generating damping force for low-speed driving and motorway cruising, it delivers excellent steering response and stability, as well as ensuring superb ride comfort for all on board.

06. ELECTRIC POWER STEERING

A new steering rack mounted Electric Power Steering, as opposed to a conventional steering column mounted system, gives more refined feedback from the road and a sense of unity with the car.



01



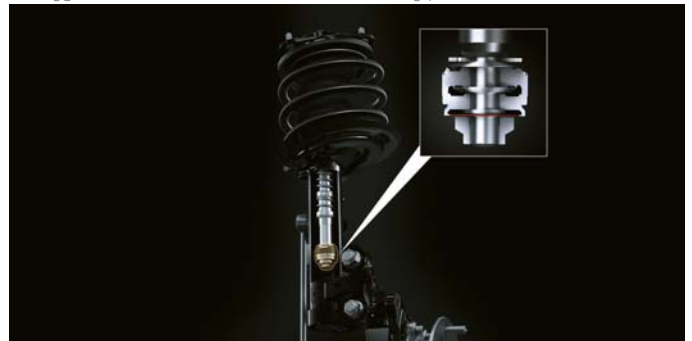
02



03



04

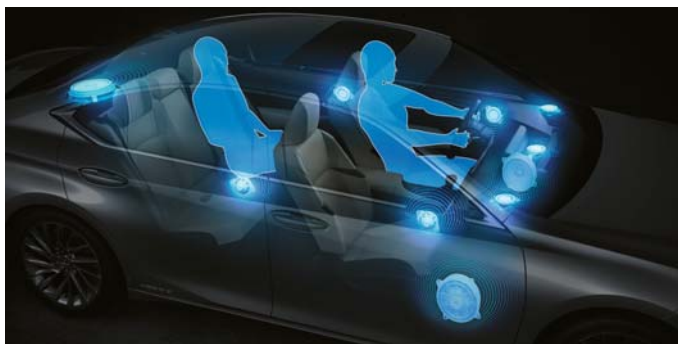


05



06

* Not available on F SPORT models.



01

01. 10-SPEAKER PIONEER SYSTEM

The ES comes standard with a Pioneer 10-speaker audio system which faithfully reproduces the original sound while retaining the whole live ambience of the music. Pioneer's digital signal processing technology is used to reproduce CD-quality sounds from MP3 compressed audio files. The speakers at the side of the instrument panel have been installed at the optimum angle for achieving a dynamic and rich sound field. Thus, sound is efficiently delivered to the listener from the speaker both directly as well as indirectly, having been reflected off the car windows.



02

02. 17-SPEAKER MARK LEVINSON® PUREPLAY

The breakthrough Mark Levinson® PurePlay system makes its debut on the new Lexus ES. Its design architecture was created to immerse driver and passengers in the most powerful, precise and pure audio experience yet. PurePlay leverages multiple technologies to provide outstanding in-vehicle performance: precision staging, world-class speaker design and placement, and unparalleled tuning and decompression technology. A total of seven Unity™ speakers are placed at shoulder height around the cabin, enhancing acoustics and creating a tonal synergy. The system also features two elliptical subwoofers in the front doors and the biggest subwoofer yet (265 mm) underneath the rear window.



03

03. OPTITRON INSTRUMENTATION

The ES cockpit features Optitron instrumentation with a central 7-inch TFT (Thin Film Transistor) LCD (Liquid Crystal Display) on ES models and an 8-inch TFT LCD on ES 300h F SPORT model.



04

04. HEAD-UP DISPLAY

Vehicle data is projected in colour directly onto the windscreen. The Head-Up Display, measuring 260 mm x 97.5 mm, lets you check data like navigation commands, audio settings or safety features without taking your eyes off the road ahead.



05

05. EMERGENCY RESPONSE SYSTEM-eCALL

For your safety, eCall provides both manual and automatic emergency call functionality. Following a collision with airbag deployment, emergency services are automatically contacted and receive the vehicle's exact location and identification. You can also reach emergency services by pressing the emergency call button at any time.

01. LEXUS PREMIUM NAVIGATION

With vivid 3D graphics and many mapping options such as 'Point Of Interest search', the latest maps can be updated using 'Over The Air' technology. For added convenience, the system also includes an electronic owner's manual. To enhance your navigation experience, online services such as online traffic, parking search, petrol station search, weather forecast, Google Search or Google Street View are available.

02. TOUCH PAD

You can control the ES sedan's main display screen using a Touch Pad mounted on the centre console or by voice commands. The Touch Pad interface has been designed to give you the intuitive feel of a smartphone, with operations such as scrolling, pinching or tapping.

03. LEXUS LINK - CONNECTED SERVICES

Connecting to the new Lexus Link app transforms your ES into a connected car. Lexus Link gives you seamless access to connected services like:

- 📊 **Driving Analytics:** Tracks your journeys, driving style and business trips. The ES 300h also offers bespoke Hybrid Coaching advice to help lower both harmful emissions and fuel consumption
- 📍 **Find my Car:** Locates your Lexus and guides you back to it
- 🔧 **Service and Maintenance:** Helps you manage the care of your ES
- 📱 **Share to Car:** Lets you plan a route on another device and send it to your Lexus, while 'Car to Door' guides you on foot to your final destination once you are parked

04. SMARTPHONE INTEGRATION

With Apple CarPlay® and Android Auto®, the ES allows you to easily display and access some of your smartphone's apps on the central display screen.

05. WIRELESS SMARTPHONE CHARGER

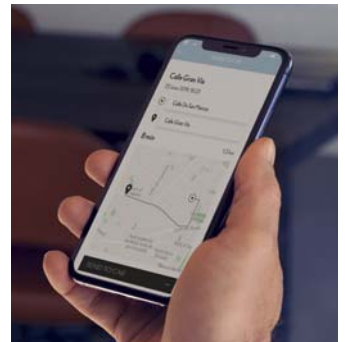
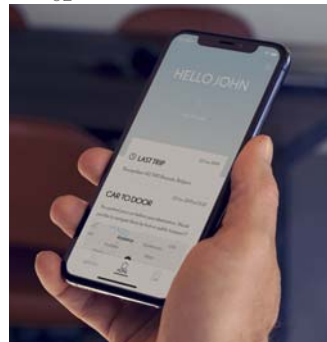
You can charge compatible smartphones via the inductive wireless battery charger, conveniently positioned on ES's centre console.



01



02



03



04



05

LEXUS SAFETY SYSTEM +



01



02/03



04



05



06

01. LEXUS SAFETY SYSTEM + / 5-STAR NCAP RATING

On its launch, the new ES 300h was named both 'Safest Large Family Car' and 'Safest Electric/Hybrid Car' by Euro NCAP. Innovative technologies such as Lexus Safety System + that includes a pioneering Pre-Collision System, now with pedestrian detection at night and bicycle detection during daytime, contributes to its class-leading Euro NCAP 5-star rating.

02. PRE-COLLISION SYSTEM

Already capable of detecting oncoming vehicles and pedestrians during daytime, the latest Pre-Collision System on the new ES can now also detect pedestrians at night and bicycles during daytime. To achieve this, the camera sensitivity and dynamic range have been enhanced to help reduce accidents in the dark, for example, when a pedestrian in front of an oncoming vehicle is difficult to see due to the vehicle's lights. Furthermore, the millimetre wave radar detection area angle has been widened, enabling bicycles to be detected during daytime. If the system judges that the possibility of a collision is high, the brakes are automatically applied to support collision avoidance, or reduce damage in the event of a collision.

03. DYNAMIC RADAR CRUISE CONTROL

The system uses the millimetre wave radar sensor and camera to detect the preceding vehicle and provide control to maintain an appropriate distance. If the preceding vehicle stops, the system will stop the ES. When the preceding vehicle starts off again, the ES will start-off and continue following. This system reduces the burden on the driver in situations requiring frequent starting and stopping.

04. ROAD SIGN ASSIST

The Road Sign Assist (RSA) system on the new ES recognises traffic signs and provides information to the driver in the multi-information display. Linked to Dynamic Radar Cruise Control (DRCC) the vehicle's speed setting can be quickly reset in accordance with the speed limit recognised by RSA. All it takes is the touch of a button.

05. LANE TRACING ASSIST

Lane Tracing Assist helps the driver in keeping the vehicle in the centre of the lane. It is also capable of providing assistance when driving around bends with a tighter radius than the previous system. If the system determines that there is a possibility of the vehicle departing from the lane, it will switch to departure prevention control, providing support for returning the vehicle to the centre of the lane.

06. AIRBAGS

Extending its safety performance even further, the new ES has a comprehensive shield of ten airbags as standard. These include driver and front passenger airbags and knee airbags, side airbags front and rear, and curtain airbags covering all side windows.

Under no circumstances should Lexus Safety System + be used to replace your driving skills at the wheel. Please read the instructions very carefully before operating the system and remember the driver is always responsible for safety. Details of specifications and equipment are subject to change to suit local conditions and requirements. Please enquire at your local Lexus Authorised Retailer.

01. TWO-STAGE ADAPTIVE HIGH BEAM SYSTEM*

This intelligent new system uses two-stage headlights that enable top/bottom partial illumination to enhance visibility while avoiding dazzling oncoming vehicles. When light from a vehicle is detected in front, the LED chips are turned on or off to adjust the high beam distribution so that it does not directly hit the detected vehicle. This approach enables excellent light beam control. For example, it allows the light to be dimmed around a vehicle in front while still illuminating a street sign above the vehicle. Multiple LED chips (24 per side) are used to enable even more precise control over which areas are dimmed and which are illuminated brightly.



01

02. TYRE PRESSURE WARNING SYSTEM

Receiving data from a sensor installed in each tyre, the multi-information display shows tyre pressure data and warns accordingly should pressure drop in one of them. The system can reduce the risk of a puncture, while helping to improve fuel economy and tyre life.

03. PARKING SUPPORT ALERT

Giving great confidence when parking at close quarters, Parking Support Alert gives warning of a collision using clearance sonar, Rear Cross Traffic Alert and a display in the rear camera.

04. REAR CROSS TRAFFIC ALERT AND BRAKING

The Rear Cross Traffic Alert function operates when the car is reversing. It detects obstacles around the car, and vehicles and pedestrians approaching the area behind the vehicle. When necessary, the system alerts you with a buzzer and a visual display in the centre display and relevant door mirrors. If necessary, it can apply Drive Force Control and Brake Control to avoid collision.



02

05. BLIND SPOT MONITOR

Radar devices mounted in the rear bumper detect vehicles in adjacent lanes that are not visible in the door mirrors. If the driver is indicating to change lane and a vehicle enters the blind spot, a warning signal appears in the relevant door mirror.



03/04

05

06. DIGITAL SIDE-VIEW MONITOR

The optional Digital Side-View Monitor system replaces conventional door mirrors with compact, external cameras linked to in-car monitors. This pioneering Lexus technology provides you with a better rear side view in all driving conditions, especially at night and when it is raining. Reducing or eliminating blind spots completely, the system adapts automatically to give an extended view when the ES is turning or reversing.



06

07. LEXUS PARKING ASSIST / PANORAMIC VIEW MONITOR

The Lexus Parking Assist Monitor** helps you reverse into parking spaces. On the central display it shows a video image of the space into which you are reversing, and overlays guidelines to facilitate you steering the car. For easier driving in confined spaces, the Panoramic View Monitor provides a near-360° view around the entire vehicle. It also creates a virtual 3D picture of your ES, with on-screen guides to assist close-quarter manoeuvring in the city.



07

* Standard on F SPORT, F SPORT S and Luxury.

** Standard on Luxury and F SPORT S. People and obstacles that show in the monitor differ from the actual position and distance. Do not rely completely on the monitor and, for safety, make sure you check around the vehicle with your own eyes when driving.



01 / 02 / 03

01. 18" ALLOY WHEELS

For an eye-catching look, the new ES 300h Limited Edition Grade offers distinctive 18" alloy wheels.

02. RAIN SENSOR

Depending on the intensity of the rainfall, a sensor fitted to the front windscreen automatically varies your wiper speed to ensure a clear view ahead.

03. WINDSCREEN DE-ICER

The ES 300h Limited Edition Grade is equipped with a windscreen de-icer to remove frost on cold mornings.

04. LEXUS SCUFF PLATES

As a finishing touch to the ES 300h Limited Edition, scuff plates offer a brushed aluminium look and are inscribed with the Lexus logo.



04



05

05. BLIND SPOT MONITOR / REAR CROSS TRAFFIC ALERT AND BRAKING

Whilst Blind Spot Monitor radar devices mounted in the rear bumper detect vehicles in adjacent lanes that are not visible in the door mirrors, the Rear Cross Traffic Alert function operates using the same sensors when your ES is reversing. It detects obstacles around the car, and vehicles approaching the area behind. If required, it can apply Drive Force Control and Brake Control to avoid a collision.

06. 12.3" MULTIMEDIA DISPLAY WITH LEXUS PREMIUM NAVIGATION

Equipped with an extra-wide 12.3-inch multimedia display, Lexus Premium Navigation on the ES 300h Special Edition Grade offers vivid 3D graphics and can be updated using 'Over The Air' technology. Equipped with Apple CarPlay® and Android Auto®, the ES allows you to easily display and access apps from your smartphone on the 12.3-inch screen.



06

07. HEATED STEERING WHEEL

Equipped with a heater for colder mornings, this beautifully crafted leather steering wheel has integrated switches to control audio, telephone, voice recognition, multi-information display, Dynamic Radar Cruise Control and Lane Tracing Assist.

08. WIRELESS SMARTPHONE CHARGER

A wireless smartphone charger inside the ES 300h Limited Edition Grade's central console box allows compatible portable devices to be easily charged, eliminating the need to connect a charging cable.



07



08

01. 19" ALLOY WHEELS

Inspired by those on the LC sports coupé and LS flagship sedan, ES 300h F SPORT model is fitted with exclusive 19" 5-twin-spoke alloy wheels with a dark metallic coating.

02. F SPORT STEERING WHEEL

Featuring the F SPORT logo, you'll sense a special kind of connectedness every time you take this wheel in your hands. Finished in perforated leather, the F SPORT gearshift design matches the steering wheel to create an exciting sports ambiance.

03. F SPORT INSTRUMENTS

This F SPORT central meter features innovative 8" Thin Film Transistor technology and a design inherited from the iconic Lexus LFA supercar. The display has a tachometer needle and digital speed indicator, as seen on Lexus F marque cars.

04. F-ALUMINIUM INLAY

With a look inspired by traditional Japanese swords, 'Hadori' cabin trim displays a three-dimensional effect that varies depending on the viewing angle.

05. F SPORT SEATS

Enjoy figure-hugging F SPORT leather seats similar to those on the LC sports coupé. All stitching on the seats, steering wheel, instrument panel and gearshift is overseen by our 'Takumi' master craftspeople.

06. F SPORT GRILLE

The exclusive F SPORT grille and front bumper design sets the ES 300h F SPORT model apart. Finished in jet black, the grille's complex mesh required more than six months of intensive computer modelling to design.

07. F SPORT SCUFF PLATES & DRILLED SPORT PEDALS

Giving durable protection, F SPORT scuff plates are finished with a brushed aluminium look and are inscribed with the Lexus logo. Offering excellent grip characteristics, drilled aluminium pedals reflect the motorsport design heritage of the ES 300h F SPORT model.

08. ES Sport S+ MODE

Select using Drive Mode Select on the ES 300h F SPORT, Sport S+ adjusts suspension, steering and throttle response to realise sportier driving performance.

09. ADAPTIVE VARIABLE SUSPENSION

For an even higher level of dynamic performance, F SPORT models feature an Adaptive Variable Suspension, similar to that found in the LC sports coupé. This adds adjustable dampers at each wheel with 650 levels of damping force to provide ultimate control on any road surface.

10. PERFORMANCE DAMPERS

The ES 300h F SPORT model has performance dampers front and the rear to increase the rigidity of the chassis. This way the actual suspension components cannot be influenced by chassis flex or vibration and the interior is also shielded from these vibrations.



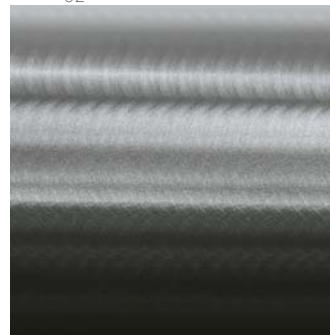
01



02



03



04



05



06



07



08



09



10



01

01. ILLUMINATED SCUFF PLATES

Lexus scuff plates add a stylish design feature while also protecting the door sill paintwork. Their brushed aluminium finish is highlighted by subtle logo illumination.



02

02. REAR BUMPER PROTECTION PLATE

Designed to protect the rear bumper paintwork against scratching when loading or unloading the boot, this accessory will keep your ES in perfect condition for many years to come.

03. RUBBER FLOOR MATS

Tailored fit rubber floor mats help protect your carpets against the very worst conditions that you or your passengers dare to tread inside.

04. TEXTILE FLOOR MATS

Luxurious yet protective black textile car floor mats. Made of sound-absorbing acuvellour, they are shaped for a perfect fit and the driver's mat has dual safety fixings to prevent it slipping.

05. WIND DEFLECTORS

Aerodynamically shaped to complement the vehicle's streamlining. When travelling with open windows, Lexus wind deflectors help maintain cabin comfort by reducing wind noise and turbulence.



03



04



05

06. BOOT LINER

Made of tough, flexible plastic with a non-slip surface pattern and a raised lip around the edges to comprehensively protect the luggage space carpet against mud, dirt, sand and liquids

07. BOOT MAT

This tough, practical and easy to clean mat gives you choices for the appearance and protection of your boot space.

08. VERTICAL CARGO NET

Strong, woven, black nylon net with two compartments for holding small items securely in your car's boot area. The net fixes neatly on to pre-fitted side and floor hooks.

09. 17" SILVER ALLOY WHEELS

The exclusive Lexus 10-spoke design of the 17" alloy wheel ideally complements the robust but also stylish appearance of the vehicle.



06



07



08



09

DEVELOPING A NEW LEXUS PAINT COLOUR IS BOTH COMPLEX AND TIME CONSUMING



Lexus designers never use off-the-shelf colours, preferring instead to develop their own, from scratch, a process that can take up to two years. The Lexus paint palette totals some 30 different colours including metallic finishes like Satin Silver and Sonic Titanium.

There are no shortcuts to creating a new Lexus colour: A designer's decision comes only after going through hundreds of samples. "When developing a new colour I see so many shades of paint that I sometimes can't see straight at the end of the day," says Megumi Suzuki, one of our most experienced colour designers. To do her job, it takes a grasp of chromogenics and a keen eye.

"Every time I meet someone or walk into a shop or go to someone's house, I check out colours and materials," she says. "There are a lot of people like me in our division."

Even after a colour has been decided upon, there's plenty to do. At various stages during development, Suzuki had to enlist a small army of experts: Lab technicians who mix the paint, clay sculptors, engineers and the assembly-line paint shop crew who would give each car a flawless, uniform coat. Every few weeks Kansai Paint (a Lexus paint supplier) produces a new batch, and Lexus designers give the samples a thorough look-over, bending the test panels to mimic the contours of a car. All are scrutinised indoors and outdoors, under floodlights, in sunlight, shade and overcast conditions, and at different times of the day and months of the year.

Selecting the final colour is not easy. A colour that is dazzling on a summer morning can appear sickly in the shade or under showroom lights. Designers also have to contend with the vagaries of their own preferences. "The odd thing about colour is that your perception of it can change depending on the season, how you feel that day and the trends you're seeing," says Suzuki.

F WHITE | 083¹



SONIC WHITE | 085²



SATIN SILVER | 1J4



SONIC TITANIUM | 1J7



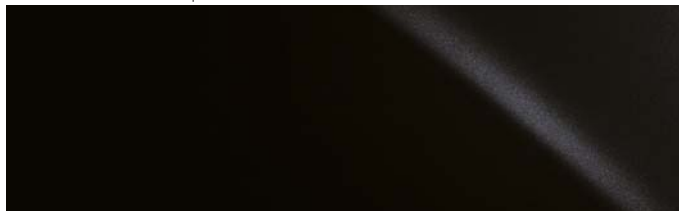
MERCURY GREY | 1H9



BLACK | 212³



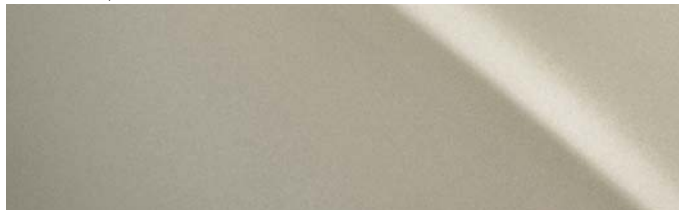
GRAPHITE BLACK | 223



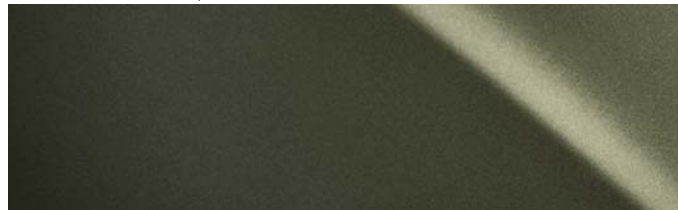
MORELLO RED | 3R1



ICE ECRU | 4X8



SUNLIGHT GREEN | 6X0



SAPPHIRE BLUE | 8X1¹



DEEP BLUE | 8X5²



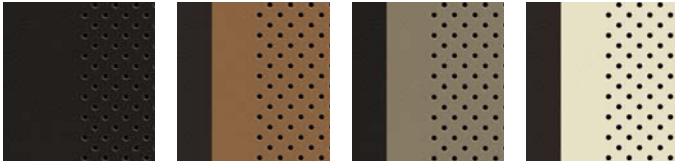
¹Exclusive on ES 300h F SPORT models.

²Not available on ES 300h F SPORT models.

³Solid colour

Please note: due to printing variances, actual paintwork colours may vary slightly from those illustrated.

TAHARA TRIM¹



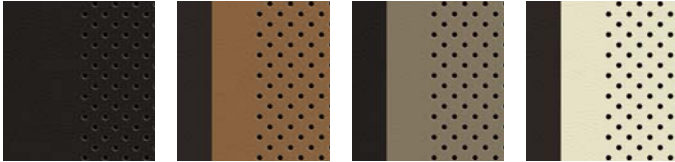
Black

Topaz Brown

Sandstone

Rich Cream

SMOOTH LEATHER²



Black

Topaz Brown

Sandstone

Rich Cream

SEMI-ANILINE LEATHER³



Black

Topaz Brown

Sandstone

Rich Cream

F SPORT TAHARA TRIM⁴



Black

Flare Red

INLAYS⁵



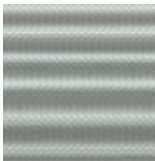
Black Grain

Brown Shimamoku

Grey Shimamoku

Bamboo

F SPORT INLAY⁶



F Aluminium

¹ Tahara trim is standard on Comfort and Limited Edition grades.

² Smooth leather upholstery is standard on Executive grade.

³ Semi-aniline leather is standard on Luxury grade.

⁴ F SPORT Tahara trim is a unique design standard on F SPORT and F SPORT S grades.

⁵ Black Grain inlays are standard on Comfort grade. Bamboo, Brown Shimamoku or Grey Shimamoku are standard on Executive and Luxury grades.

⁶ F Aluminium is standard on F SPORT and F SPORT S grades.

The images on the following 3 pages illustrate a selection of the interior combinations available. Your local Lexus Authorised Retailer will be pleased to provide you with any further help.



01



02



03

- 01 Black Tahara trim with Black Grain inlays
- 02 Topaz Brown Tahara trim with Black Grain inlays
- 03 Sandstone Tahara trim with Black Grain inlays



04



05



06

- 04 Rich Cream natural leather with Brown Shimamoku inlays
- 05 Black natural leather with Grey Shimamoku inlays
- 06 Sandstone exclusive natural leather with Grey Shimamoku inlays



07



08



09

- 07 Topaz Brown exclusive natural leather with Brown Shimamoku inlays
- 08 Black F SPORT Tahara trim with F Aluminium inlays
- 09 Flare Red F SPORT Tahara trim with F Aluminium inlays

EQUIPMENT | GRADES

EXTERIOR	COMFORT	LIMITED EDITION	EXECUTIVE	F SPORT / F SPORT S	LUXURY
Auto-levelling headlights, static	■	■	■	—	—
Auto-levelling headlights, dynamic	—	—	—	■	■
Daytime running lights, LED	■	■	■	■	■
Door mirrors, electrically adjustable, heated, folding	■	■	—	—	—
Door mirrors, electrically adjustable, heated, folding with memory	—	—	■	■	■
F-mesh signature grille	—	—	—	■	—
Front door windows acoustic glass	■	■	■	■	■
F SPORT logos, front fenders	—	—	—	■	—
Headlight cleaners	■	■	■	■	■
Headlights, bi-LED	■	■	■	—	—
Headlights, triple LED	—	—	—	■	■
Multi Weather Lights (with fog lamp function)	■	■	■	■	■
Privacy glass, rear side and back	■	■	■	■	■
Rain sensing windscreen wipers	—	■	■	■	■
Rear combination lights, LED	■	■	■	■	■
Rear spoiler	■	■	■	■	■
Sequential turn signal indicators	—	—	—	■	■
Side-view camera, electrically adjustable, auto-folding with memory, heated	—	—	—	—	○
WHEELS					
17" alloy wheels, machined finish, 215/55 R17 tyres	■	—	—	—	—
18" alloy wheels, hyper-chrome coating, 235/45 R18 tyres	—	—	—	—	■
18" alloy wheels, machined finish, 235/45 R18 tyres	—	■	■	—	—
19" alloy wheels, F SPORT design, 235/40 R19 tyres	—	—	—	■	—
ACTIVE SAFETY AND DRIVING DYNAMICS					
2-stage Adaptive High-beam System (AHS)	—	—	—	■	■
Adaptive Variable Suspension (AVS)	—	—	—	■	—
Blind Spot Monitor (BSM)	—	■	■	■	■
Drive Mode Select, ECO / NORMAL / SPORT	■	■	■	—	■
Drive Mode Select, ECO / NORMAL / SPORT / SPORT +	—	—	—	■	—
Dynamic Radar Cruise Control (DRCC)	■	■	■	■	■
Electronic Parking Brake (EPB)	■	■	■	■	■
Electronic Power Steering (EPS)	■	■	■	■	■
Electronically Controlled Braking-Regeneration (ECB-R)	■	■	■	■	■
EV (Electric Vehicle) mode	■	■	■	■	■
Front performance damper	—	—	—	■	■
Hill-start Assist Control (HAC)	■	■	■	■	■
Intelligent parking assist sensors, front and rear	■	■	■	■	■
Lane Tracing Assist (LTA)	■	■	■	■	■
Pre-Collision Sustem (PCS)	■	■	■	■	■
Rear Cross Traffic Alert and Braking (RCTAB)	—	■	■	■	■
Road Sign Assist (RSA)	■	■	■	■	■
Sports suspension	—	—	—	■	—
Tyre Pressure Warning System (TPWS) with auto-location	■	■	■	■	■
Vehicle Stability Control (VSC)	■	■	■	■	■

EQUIPMENT | GRADES

PASSIVE SAFETY	COMFORT	LIMITED EDITION	EXECUTIVE	F SPORT / F SPORT S	LUXURY
Airbag cut-off switch, front passenger	■	■	■	■	■
Airbags, driver and front passenger; head, side and knee / full-length curtain shield / rear side	■	■	■	■	■
Audible and visual seatbelts reminder	■	■	■	■	■
ISOFIX attachment, outer rear seats	■	■	■	■	■
Pop Up Hood (PUH)	■	■	■	■	■
Seatbelt pre-tensioners, front seats	■	■	■	■	■
Seatbelt pre-tensioners, outer rear seats	■	■	■	■	■
SECURITY					
Anti-theft system - intrusion sensor / inclination sensor / siren	■	■	■	■	■
Auto door locking	■	■	■	■	■
Double door lock	■	■	■	■	■
AUDIO, COMMUNICATION AND INFORMATION					
10-speaker Pioneer® audio system	■	■	■	■ / -	-
17-speaker Mark Levinson® PurePlay	-	-	□	- / ■	■
8" multimedia display	■	-	■	-	-
12,3" multimedia display	-	■	-	■	■
Digital speedometer	■	■	■	■	■
Emergency Response System (eCall)	■	■	■	■	■
Head-Up Display (HUD)	-	-	-	- / ■	■
In-dash, single slot DVD player	-	■	-	■	■
Lexus Link Connected Services	■	■	■	■	■
Lexus Premium Navigation	-	■	-	- / ■	■
Lexus Navigation	○	-	■	■ / -	-
Panoramic View Monitor (PVM) with pedestrian alert	-	-	□	- / ■	■
Smartphone integration (Apple Carplay®, Android Auto®)	■	■	■	■	■
Touch Pad operation for multi-information display	■	■	■	■	■
Wireless smartphone charger	-	■	□	- / ■	■

- Available as standard.
 ○ Available as an option.
 □ Available as part of a pack.
 - Not available.

EQUIPMENT | GRADES

INTERIOR COMFORT AND CONVENIENCE	COMFORT	LIMITED EDITION	EXECUTIVE	F SPORT / F SPORT S	LUXURY
3-spoke, leather trimmed steering wheel with paddle shift controls	■	■	—	—	—
3-spoke, leather and wood trimmed steering wheel with heater and paddle shift controls	—	—	■	—	■
3-spoke, perforated leather trimmed steering wheel with heater and paddle shift controls	—	—	—	■	—
Card key	—	—	—	—	■
Console box inlay, choice of wood	—	—	■	—	■
Easy entry and exit facility, driver's seat/steering wheel with retract/return function	—	—	■	■	■
Easy entry and exit facility, steering wheel with retract/return function	■	■	—	—	—
Electronic climate control with humidity sensor	■	■	■	■	■
Electronic climate control with nanoe® technology	■	■	■	■	■
Electronic climate control, 2-zone with auto-recirculation	■	■	■	■	—
Electronic climate control, 3-zone with auto-recirculation	—	—	—	—	■
Front seat lumbar support, electrically adjustable, 2-way	■	■	—	■	—
Front seat lumbar support, electrically adjustable, 4-way (Driver & Passenger)	—	—	—	—	■
Front seat lumbar support, electrically adjustable, 4-way (Driver) / 2-way (Passenger)	—	—	■	—	—
Front seats with adjustable cushion length (driver)	—	—	■	—	—
Front seats with adjustable cushion length (driver) with shoulder switch for passenger seat adjustment	—	—	—	—	■
Front seats, electrically adjustable	■	■	—	—	—
Front seats, electrically adjustable with memory (driver and passenger)	—	—	—	—	■
Front seats, electrically adjustable with memory (driver)	—	—	■	■	—
Front seats, F SPORT design	—	—	—	■	—
Glass sunroof, electric tilt/slide	■	■	■	■	■
Heated front seats	■	■	■	■	■
Heated rear seats	—	—	—	—	■
Heated steering wheel	—	■	■	■	■
Inlays, Black Grain	■	■	—	—	—
Inlays, choice of wood style with ambient illumination	—	—	■	—	■
Inlays, F Aluminium	—	—	—	■	—
Machined aluminium sports pedals	—	—	—	■	—
Rear-view mirror, electro chromatic (auto dimming)	■	■	■	■	■
Scuff plates, stainless steel with LEXUS inscription	—	■	■	■	■
Scuff plates, stainless steel with LEXUS inscription, front doors	■	—	—	—	—
Smart entry and start system	■	■	■	■	■
Sunshade, rear window, electric	—	—	■	—	■
Sunshades, rear door windows, manual	—	—	—	—	■
Trunk lid, electrically operated with hands-free opening function	—	—	■	■	■
Tyre repair kit	■	■	■	■	■
Upholstery, F SPORT Tahara trim	—	—	—	■	—
Upholstery, leather	—	—	■	—	—
Upholstery, semi-aniline leather	—	—	—	—	■
Upholstery, Tahara trim	■	■	—	—	—
Ventilated front seats	—	—	■	—	■
Windscreen de-icer	—	■	■	■	■

EQUIPMENT | PACKS

PACKS	COMFORT	LIMITED EDITION	EXECUTIVE	F SPORT / F SPORT S	LUXURY
Technology pack					
Panoramic View Monitor (PVM) with pedestrian alert	–	–	□	–/■	■
17-speaker Mark Levinson® PurePlay	–	–	□	–/■	■
Wireless smartphone charger	–	□	□	–/■	■

- Available as standard.
 ○ Available as an option.
 □ Available as part of a pack.
 – Not available.

TECHNICAL DATA

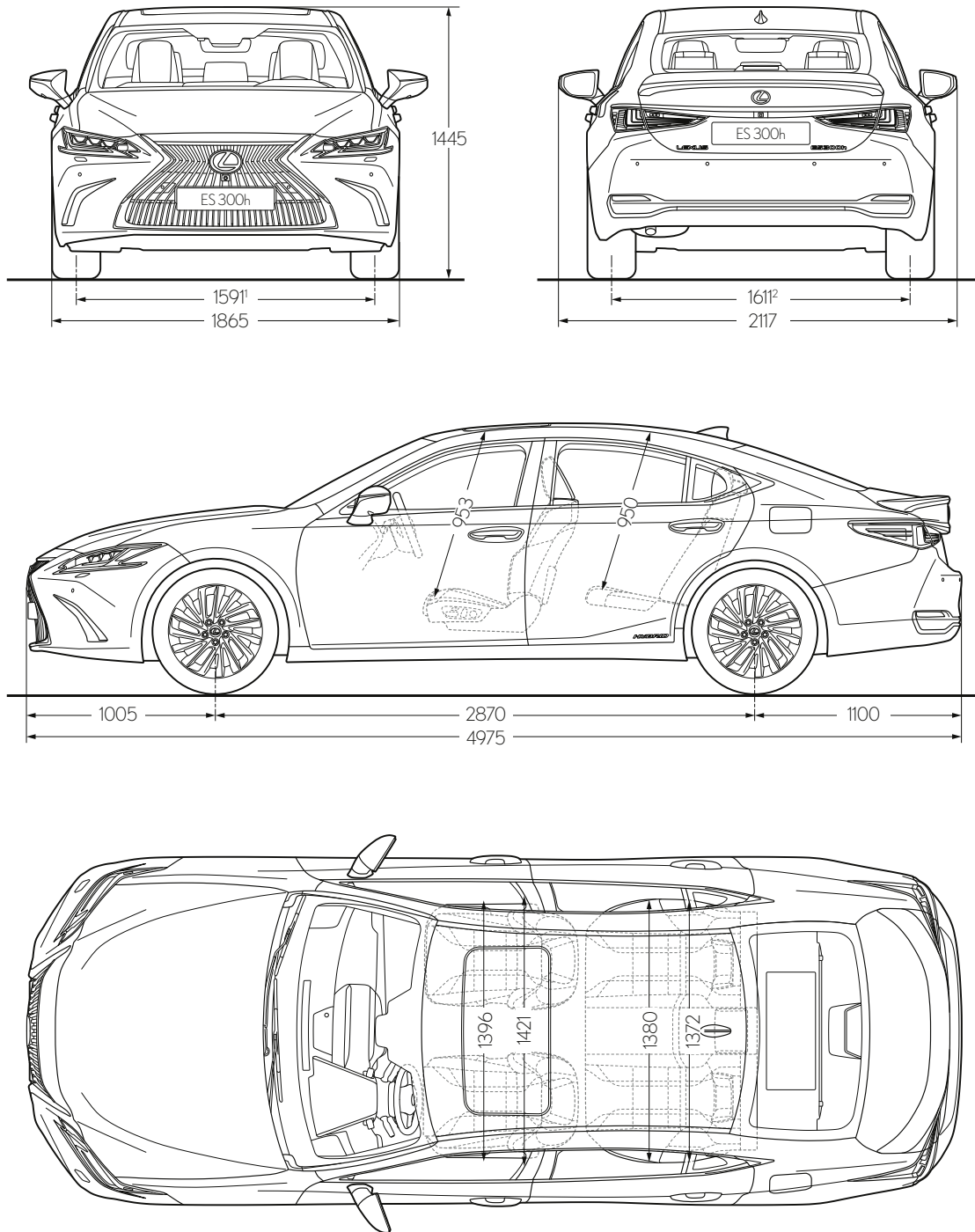
ENGINE		ES 300h
Capacity (cm ³)		2487
Cylinders / Valves		L4 / 16
Maximum power (DIN hp @ rpm)		178 @ 5700
Maximum power (kW @ rpm)		131 @ 5700
Maximum torque (Nm @ rpm)		221 @ 3600 - 5200
ELECTRIC MOTOR		
Type		AC synchronous, permanent magnet
Maximum power (DIN hp)		120
Maximum power (kW)		88
Maximum torque (Nm)		202
TRANSMISSION		
Type		Electronic-Continuously Variable Transmission
Drive		Front-Wheel Drive
TOTAL SYSTEM OUTPUT		
Total power (DIN hp)		218
Total power (kW)		160
PERFORMANCE		
Maximum speed (km/h)		180
Acceleration 0-100 km/h ¹ (s)		8.9
FUEL CONSUMPTION ² (l/100km)		
Combined		5.2 - 5.6
CO ₂ EMISSIONS ² (g/km)		
Combined		119 - 127
EMISSION STANDARD		
Euro Class		EURO 6d-ISC-FCM
WEIGHTS (kg)		
Gross vehicle		2150
Kerb (min. - max.)		1680 - 1740
CAPACITIES (l)		
Luggage volume ³		454
Fuel tank capacity		50

¹ Tentative values shown, with two occupants.

² The fuel consumption and CO₂ values are measured in a controlled environment on a representative production model, in accordance with the requirements of the new WLTP European Regulation EC 2017/1151 and its applicable amendments. For each individual vehicle configuration, the final fuel consumption and CO₂ values may be calculated based on the ordered optional equipment. The fuel consumption and CO₂ values of your vehicle may vary from those measured or calculated values, as driving behaviour as well as other factors (such as road conditions, traffic, vehicle condition, tyre pressure, load, number of passengers, etc.) have an influence on a car's fuel consumption and CO₂ emissions. For more information regarding the new WLTP test method, please visit: www.lexus.eu/wltp#nedc

³ Luggage volume is calculated as per the VDA method.

TECHNICAL DATA



¹ Figure quoted is for ES models equipped with 18" or 19" alloy wheels. For models equipped with 17" wheels, the figure is 1600.

² Figure quoted is for ES models equipped with 18" or 19" alloy wheels. For models equipped with 17" wheels, the figure is 1610.

Please note: the dimensions illustrated / noted are measured in millimetres.

More about the new ES:

lexus.ee/ES

lexus.lv/ES

lexus.it/ES

lexus.no/ES

lexus.dk/ES

youtube.com/LexusEurope

twitter.com/Lexus_EU

© 2020 Lexus Europe* reserves the right to alter any details of specifications and equipment without notice. Details of specifications and equipment are also subject to change to suit local conditions and requirements. Please enquire at your local Lexus Authorised Retailer of any such changes that might be required for your area.

Note: Vehicles pictured and specifications detailed in this brochure may vary from models and equipment available in your area. Vehicle body colour might differ slightly from the printed photos in this brochure.

For further information please visit our website: www.lexus.eu

Taking care of the environment is a priority for Lexus. We take many measures to ensure that during the lifecycles of our vehicles – from design, production, distribution, sales and service to end-of-life – their environmental impact is minimised. Your retailer will be happy to provide more information on end-of-life vehicle requirements.

* Lexus Europe is a division of Toyota Motor Europe NV/SA.

Printed in Europe, July 2020

